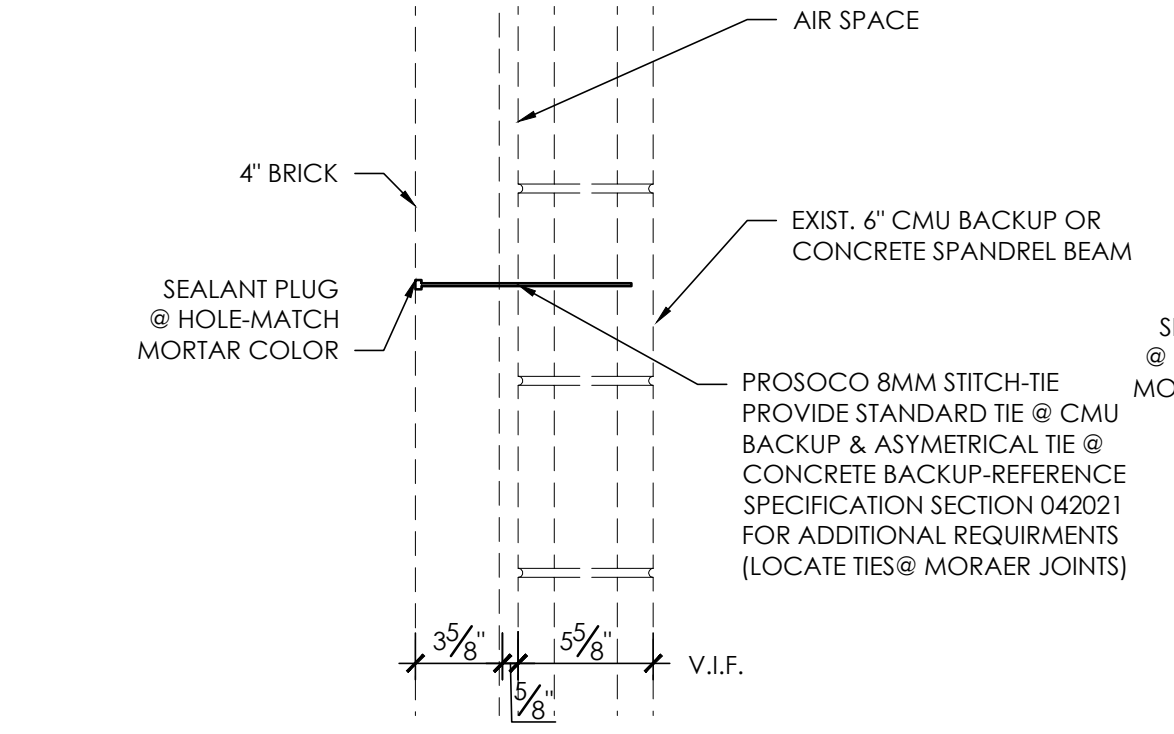
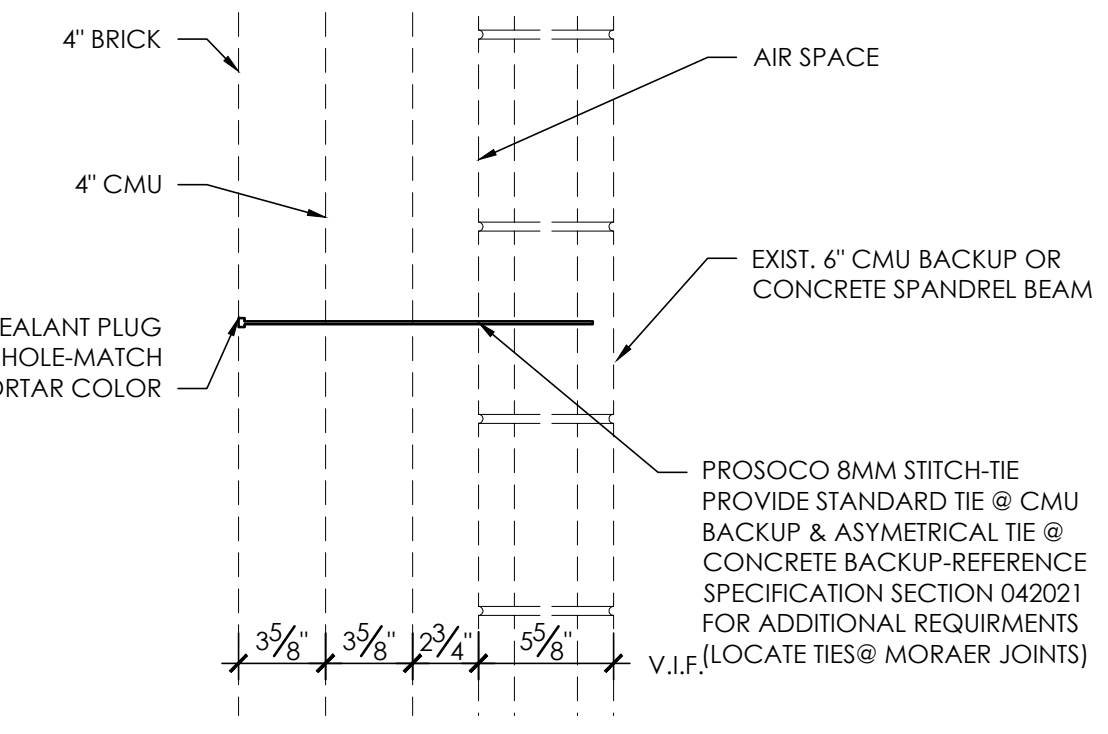


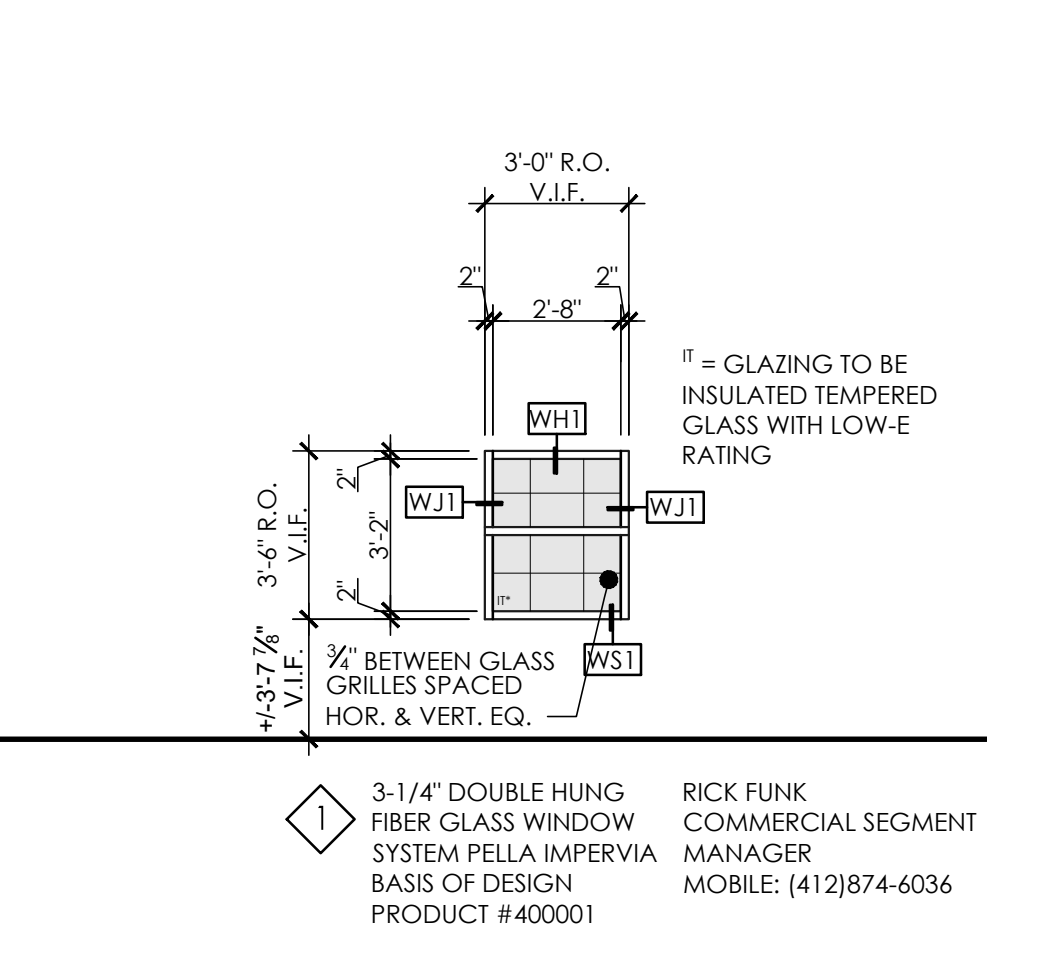
1 DETAIL
 A1.1 SCALE: 1-1/2" = 1'-0"



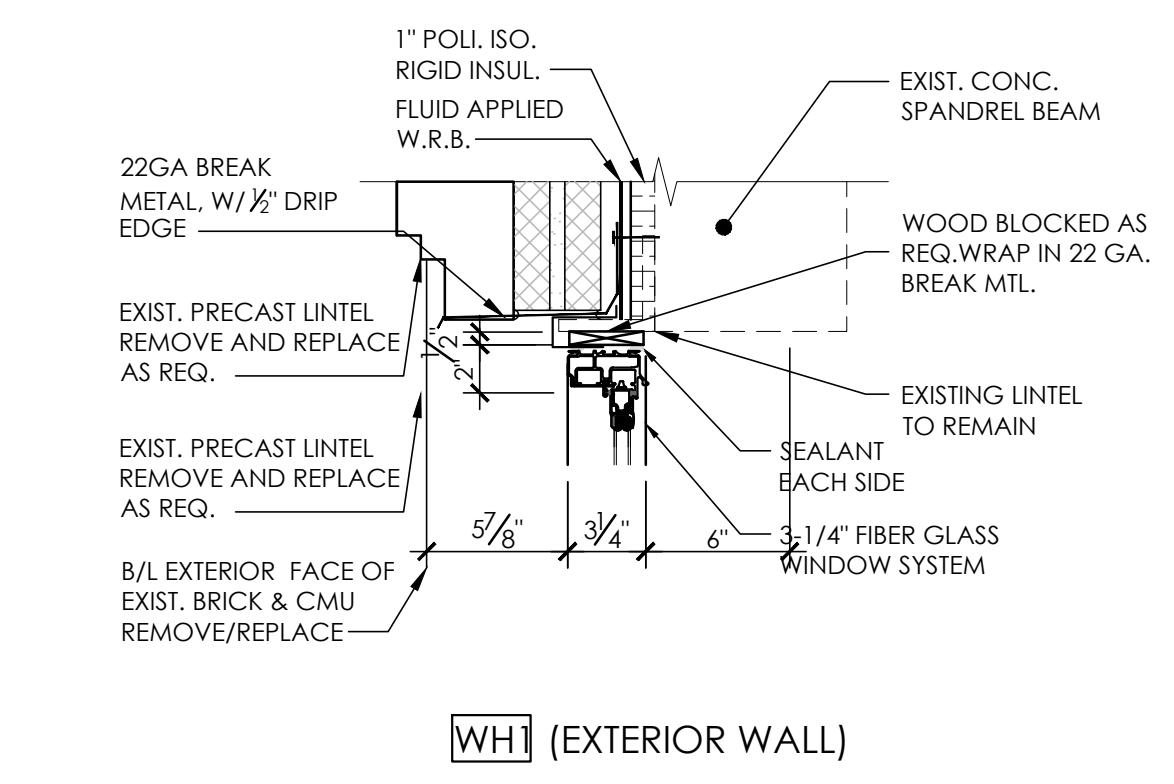
3 SITCH-TIE DETAIL @ 2ND FLOOR & ABOVE
 A1.1 SCALE: 1-1/2" = 1'-0" (ALTERNATE NO.1) REFERENCE SHEET A1.0



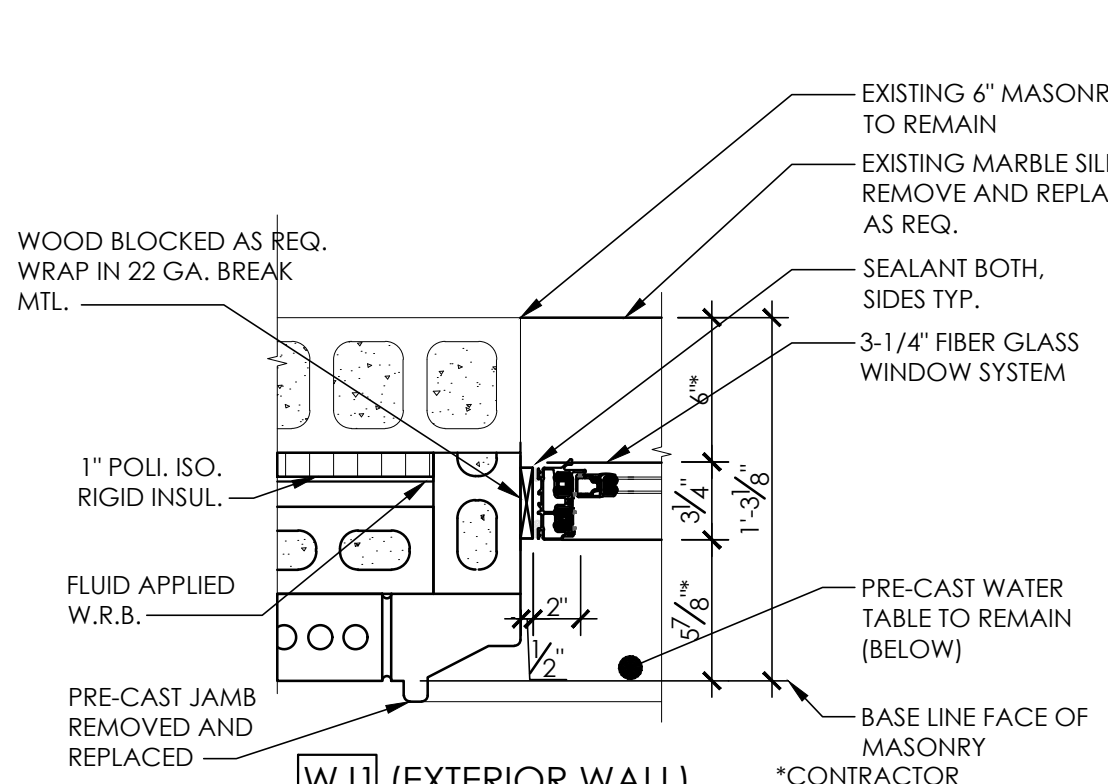
4 SITCH-TIE DETAIL @ GROUND TO 2ND FLOOR
 A1.1 SCALE: 1-1/2" = 1'-0" (ALTERNATE NO.1) REFERENCE SHEET A1.0



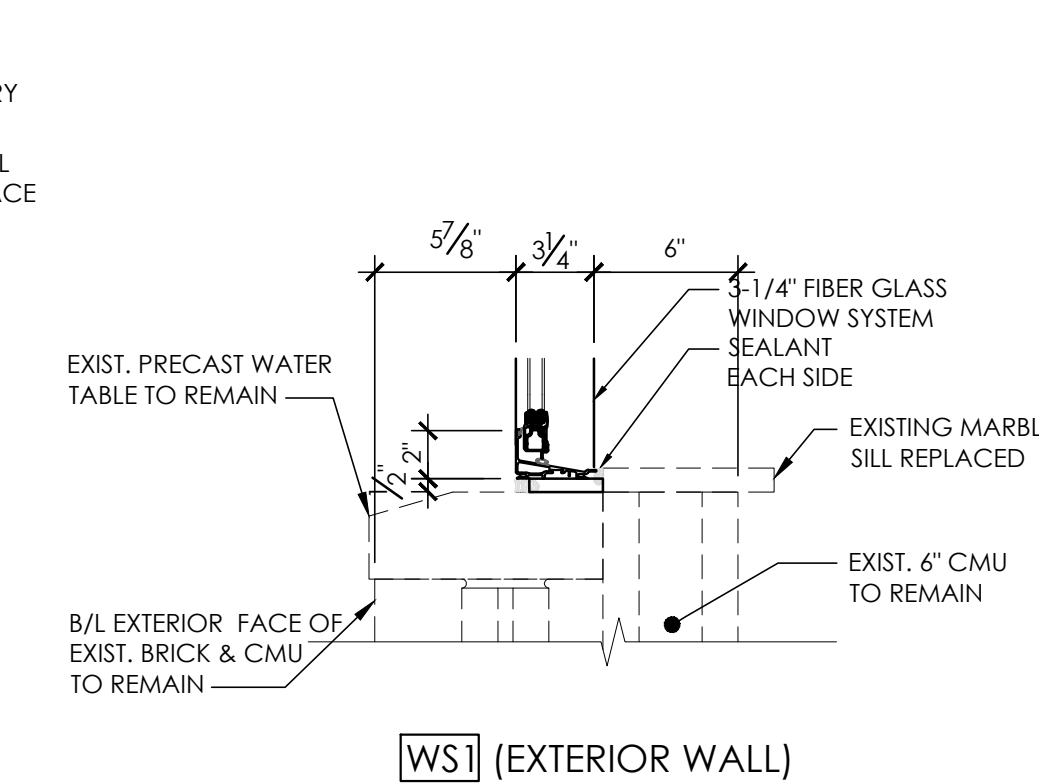
5 WINDOW ELEVATION
 A1.1 SCALE: 1/4" = 1'-0"



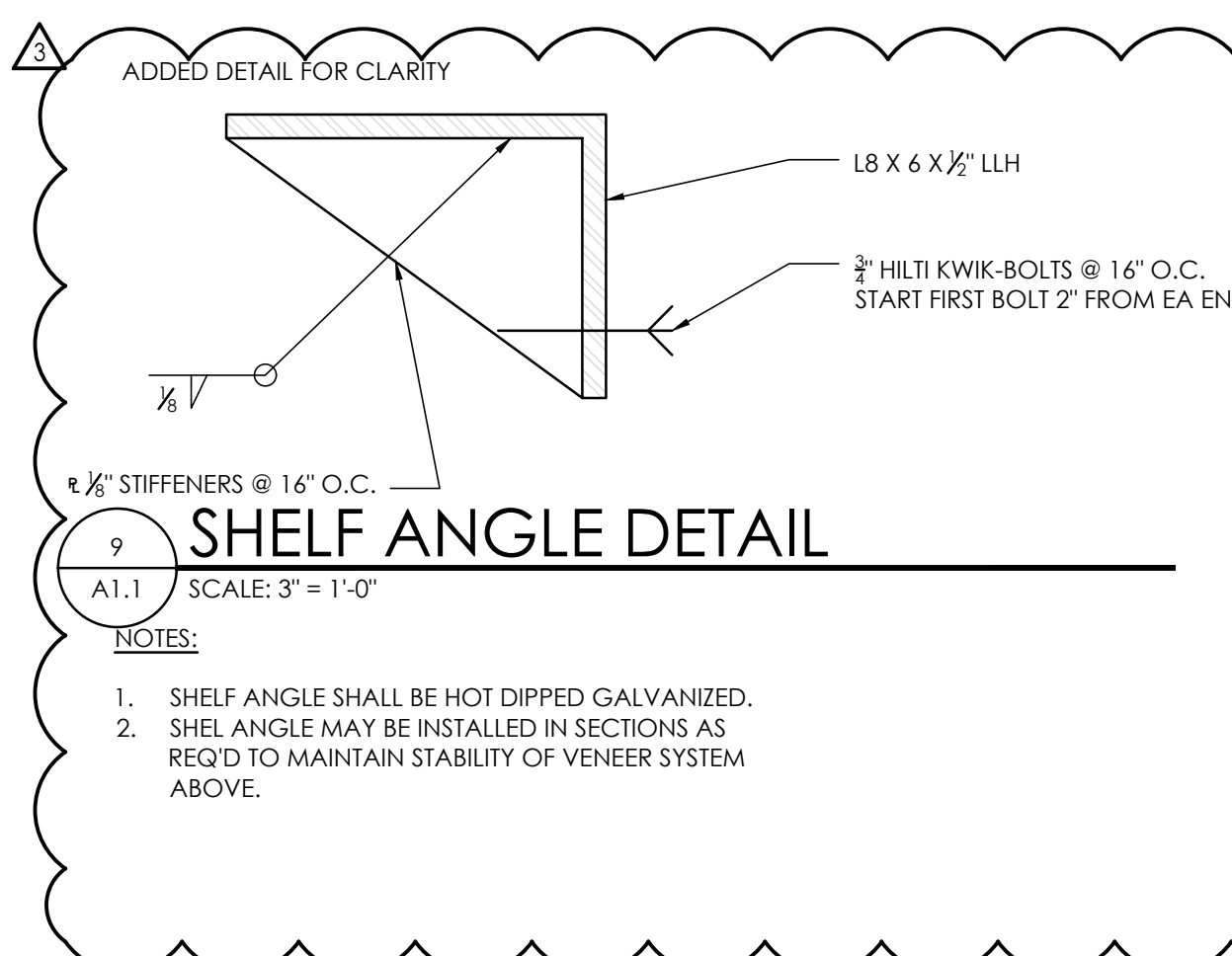
6 WINDOW HEADER DETAILS
 A1.1 SCALE: 1-1/2" = 1'-0"



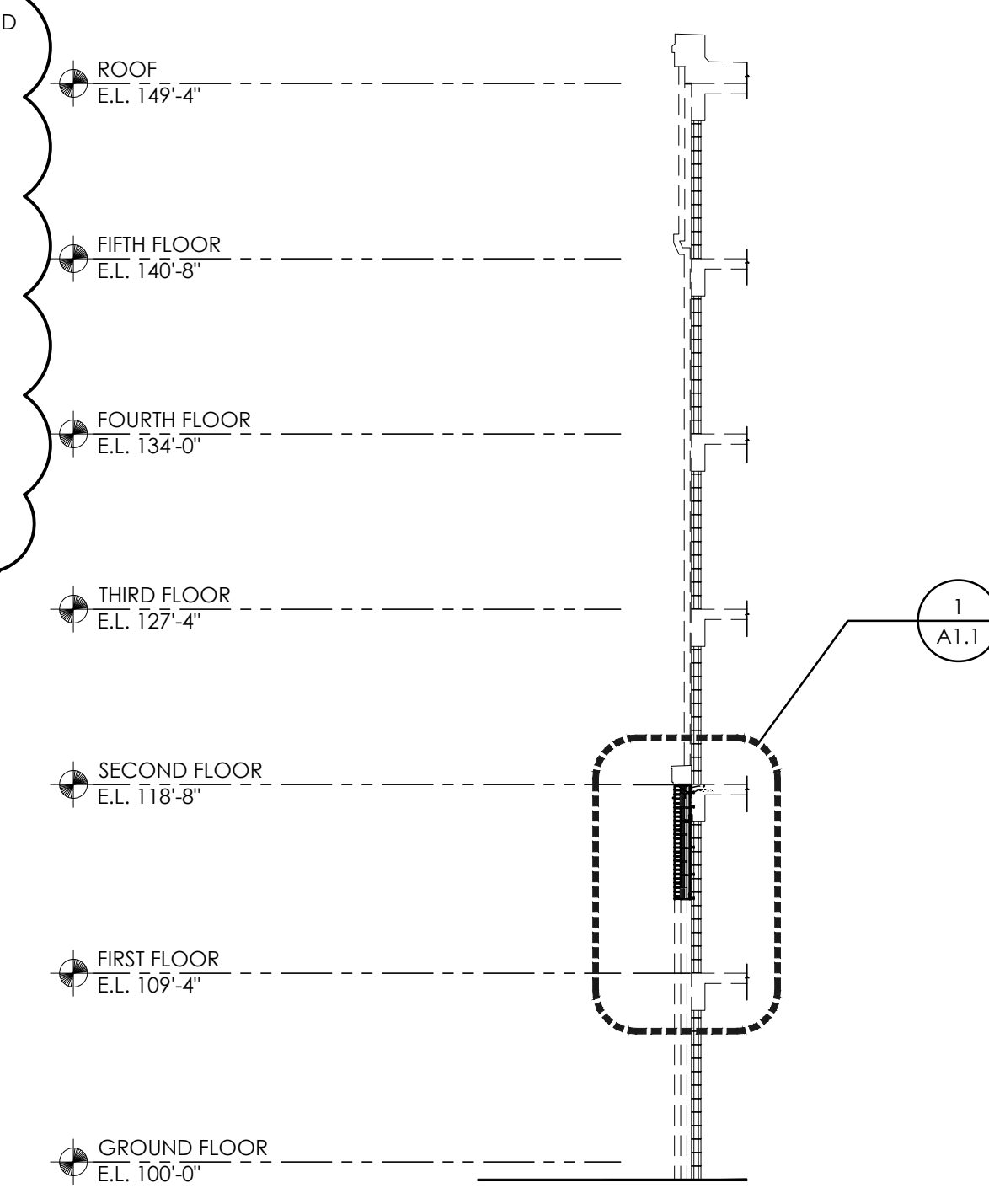
7 WINDOW JAMB DETAILS
 A1.1 SCALE: 1-1/2" = 1'-0"



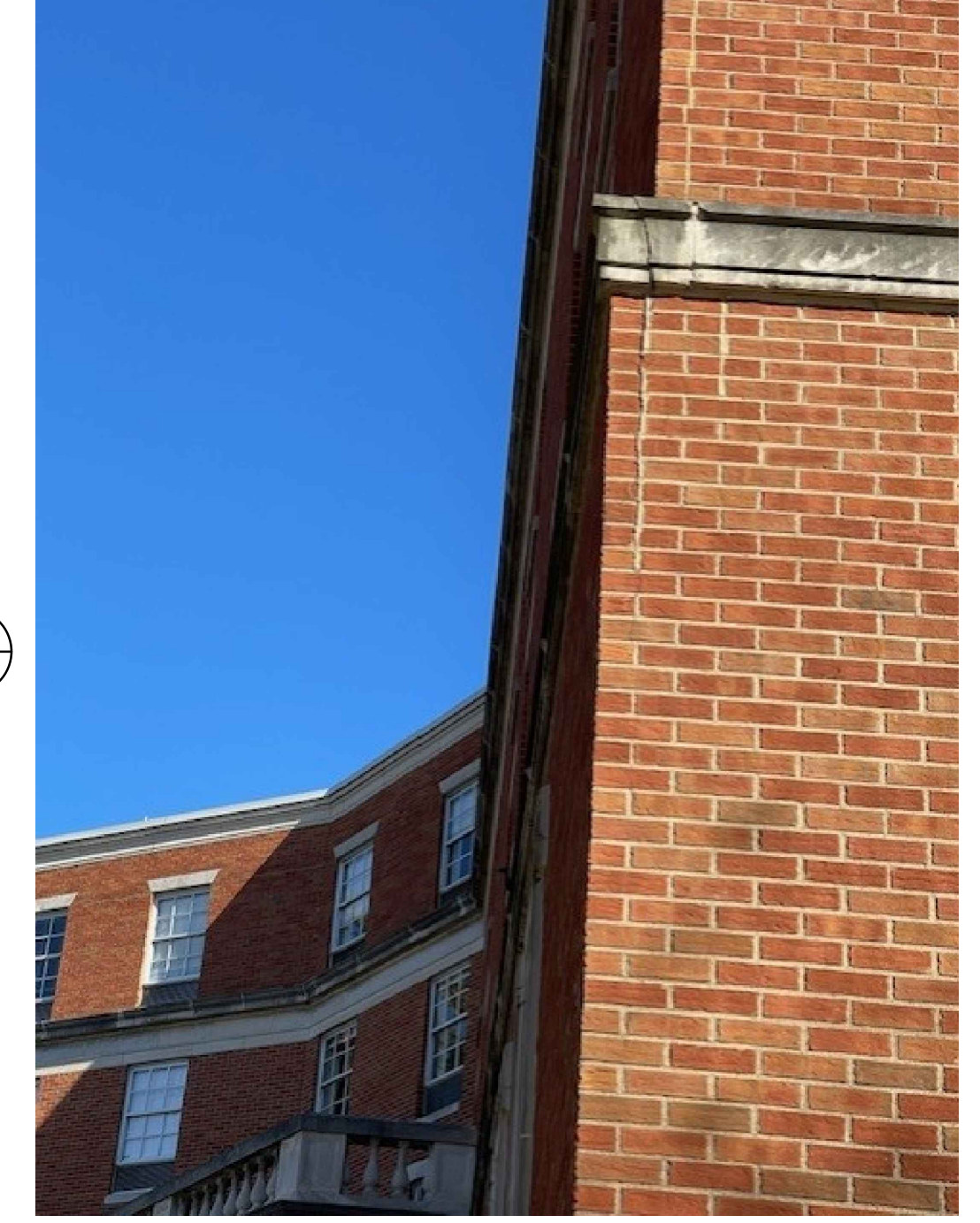
8 WINDOW SILL DETAILS
 A1.1 SCALE: 1-1/2" = 1'-0"



9 SHELF ANGLE DETAIL
 A1.1 SCALE: 3" = 1'-0"



2 TYPICAL SECTION
 A1.1 SCALE: 1/8" = 1'-0"



DAMAGED WATER TABLE
 SCALE: N.T.S.



NORTH EAST ELEVATION
 SCALE: N.T.S.

THIS DESIGN, DRAWING OR PRINT IS THE PROPERTY OF M & G ARCHITECTS AND ENGINEERS, INC. AND IS SUBJECT TO RETURN ON REQUEST. THE DESIGN CONCEPTS AND INFORMATION CONTAINED HEREIN ARE PROPRIETARY TO THIS COMPANY AND ARE SUBMITTED IN CONFIDENCE. THEY MUST NOT BE DISCLOSED, COPIED, REPRODUCED OR OTHERWISE USED IN ANY MANNER WITHOUT THE WRITTEN CONSENT OF M & G ARCHITECTS AND ENGINEERS, INC.

DRAWING STATUS
 DESIGN STAGE:
 SCHEMATIC DESIGN
 DESIGN DEVELOPMENT
 CONSTRUCTION DRAWINGS
 RELEASED FOR:
 REVIEW
 BIDDING
 CONSTRUCTION

WEST LIBERTY UNIVERSITY
HUGHES HALL FACADE REPAIR
 WEST LIBERTY, WEST VIRGINIA 26074
 SECTIONS & DETAILS

REVISION	
ADDENDUM NO. 3	08-26-24

DRAWN BY: J. LANGSDORF	CHECKED BY: E. MATYSKIELA
PROJECT NO. 23-179	
SCALE: AS NOTED	DATE: 07-31-2024

SHEET
A1.1