

WL

2017

top of the hill



#topperpride

WEST LIBERTY UNIVERSITY ALUMNI & FRIENDS NEWSLETTER



THE GREAT GALA



SAVE THE DATE “BRITISH INVASION”

April 28 . 6:30 PM

OGLEBAY RESORT, GLESSNER AUDITORIUM

Featuring
BEATLEMANIA MAGIC

Brought to you by



304.336.8888 . westliberty.edu/great-gala

Message from the President



Our Top of the Hill magazine celebrates West Liberty University, its wonderful students, accomplished alumni and loyal friends. In today's world of social media, that translates to #topperpride and we take it seriously here on the Hilltop.

We believe we have much to be proud of as we approach a new calendar year. Last fall we reported a significant increase in student enrollment, an accomplishment that reflects the hard work of our employees and encouragement of our alumni.

We also have listened to our students and responded to their needs — creating more and varied student housing and adding a much-needed convenience store to our College Union shopping options.

Naturally, it was gratifying to see that in the recent issue of U.S. News & World Reports Best Colleges publication, West Liberty University came out on top. Yes, we earned the highest ranking of any public college or university in the Mountain State.

Other strides toward progress include our increase in graduate programs. This fall we added a MA/MS in biology that leads to great jobs or spurs entry into doctoral programs and professional schools such as dental or medical school. We also take pride in our degree being the first graduate biology program in the state offering an accelerated pathway in our 3 + 2 MS in biology option.

I'm sure you'll agree that we are continuing the mission established long ago to provide students the opportunity for a high quality undergraduate, graduate, and professional education here in the Northern Panhandle.

As always, my door remains open to you, as it does to all students, alumni and employees. I value your feedback and appreciate your comments as I work to provide the leadership necessary to excel in our efforts.

With gratitude for your support,

Stephen G. Greiner

#topperpride

WLU alumni and students are beaming with pride. The university is thriving and growing. Take a trip back to college years to see how campus and programs of study have changed.

7



Bird's Eye View

The face of campus is changing! Find the facts about new buildings, updated features and stunning athletic facilities on WLU's campus.



Sports on the Rise

Two new sports have been added to Hilltopper Athletics along with new coaches to nurture these programs. Football and basketball stand-out, Dan Monteroso talks about his unique story.



Alumni Achiever

Class of 1978 graduate Brian Joseph has made a name for himself internationally through his innovative Touchstone Laboratories. This science wiz is creating products that will change the way we see the universe from his home-base in Wheeling.

top of the hill

WLU HILLTOPPER PUBLISHING TEAM

Don Clegg
Angela Zambito Hill
Whitney Inkster
Jason Koegler
Tammi Secrist
Ron Witt
Maureen Zambito

PHOTOGRAPHY

Mark Campbell, Prestige Photography
Jeremy Morris

PRODUCTION

In Wheeling Magazine
www.inwheelingmagazine.com

WRITERS

Sarah Koegler
Doug Moser
Stacey Sacco

ON THE COVER

Cheerleader Julie Schuetz
Topper the Bear - Himself!
Marching Band Drummer - Jason Sivert





2018 Alumni Events

GREAT GALA

Saturday, April 28, 2018

Glessner Auditorium, Oglebay Resort, Wheeling, WV

ALUMNI & FRIENDS CUBA CRUISE

June 2-6, 2018

Depart from Tampa, FL aboard Royal Caribbean Empress of the Seas. Ports of Call include Key West, Florida and Havana, Cuba.

Cost: \$689 - Ocean View Stateroom or \$1,654 - Jr. Suite Stateroom.

Join alumni and friends for the trip of a lifetime led by Letty's Cuba Travel Agency. Planned and promoted by the WLU Florida Alumni Chapter and the WLU Alumni Office, the four-night trip offers the best of travel aboard the Empress of the Seas, Royal Caribbean International cruise line. While in Havana, enjoy a one-hour vintage car La Habana Tour and/or a private walking City Tour for an additional charge.

Havana is known for its pastel houses, 1950-era cars, cigars, Spanish-colonial architecture, salsa music, great food, drinks and beautiful scenery! Letty Annett, president of Letty's Cuba Travel and Tours and wife of Charlie Annett '66, is proud to offer her team of specialists to take WLU to the Caribbean! Join us and enjoy this fabulous trip! Alumni, family and friends are welcome! *For more information, please go online to: westliberty.edu/alumni or call Letty's Cuba Travel Agency at 954.368.0546 or email: letty@lettycuba.com.*

LARY LOEW HILLTOPPER GOLF SCRAMBLE

Monday, June 25, 2018

Arnold Palmer Golf Course, Oglebay Resort, Wheeling, WV

An annual event in memory of Lary Loew '75 who was an avid supporter of WLU athletics and its educational mission. Because of his equally strong devotion to the game of golf, this is a perfect way to memorialize him every June.

HOMECOMING

Saturday, October 20, 2018 WLU Main Campus

Homecoming is the main event of the year for alumni. It is a wonderful opportunity to reconnect with former classmates, make new friends and enjoy the beautiful campus. New activities are added every year, but some staples include tailgating, food, music, games, kids activities, parade, football and the much-anticipated crowning of the Hilltopper Homecoming King and Queen. In addition, there are fraternity and sorority reunions, a golf outing and a post-Homecoming party at the new G-Top (Generations on the Hilltop) restaurant just across Route 88 from the main campus. There are family-friendly activities on Saturday as well, including arts and crafts, face painting, balloon animals, inflatable games and more for children of all ages. Homecoming weekend is also the opportunity to honor our major donors and most distinguished alumni at the President's Recognition Dinner and Alumni Wall of Honor Induction Ceremony. Plans are underway for a 1960 and 1970 Decades Reunion Homecoming 2018. Mark your calendars and make plans to attend what is sure to be a memorable weekend. Go online to: westliberty.edu/alumni or wluconnect.com for more information.

***Thousands of alumni return to campus every October for Homecoming.
So, mark your calendars and make plans to attend the biggest alumni event of the year!***



Biology Associate Professor Joseph Horzempa, Program Director of Physician Assistant Studies Bill Childers, Associate Professor of Criminal Justice Keith Bell and Dean of the School of Professional Studies Thomas Michaud

#topperpride can be seen everywhere

West Liberty University Sees Growth

#topperpride is easy to spot. It's the black and gold colors in a sports stadium. It's the increase in enrollment numbers. It's students who are returning, year after year for a quality education on a friendly campus. It's the excitement about each new program, major, theater performance, sports team or professor. There is so much for WLU students and alumni to be proud of in 2017. Working upstream against daunting state budget cuts since 2010, West Liberty University displays its ingenuity in doing more with less and "getting creative" under the leadership of Dr. Stephen Greiner, president.

MASTER DEGREE PROGRAMS

Not that long ago, West Liberty University was home to undergraduate programs only. There are currently six Master Degree programs, with more coming soon.

The accredited Master of Arts in Education program offers focuses on Reading Specialists, Special Education, Technology Integration, Leadership Studies, Community Education Research and Leadership, and Sports Leadership and Coaching.

The Master of Professional Studies program is located in the Highlands Center and prepares professionals for career advancement and leadership positions. This program, according to the Dean of the program, Dr. Thomas Michaud, has seen exponential growth, including an increase in international students. This program will assist professionals in manufacturing, social services and many other areas to secure employment and advance in their fields.

Master of Science in Physician Assistant Studies gives students the skills to work in any medical setting they desire. The program is a combination of classroom work, laboratory experiences and clinical instruction. Graduates of this program have a 100 percent employment rate boasts Program Director Bill Childers. The program enjoys strong ties to the Wheeling area, maintaining partnerships with local hospitals and medical professionals. In 2015, it received full credentials with the highest rating possible, yet it is still the most affordable PA program in West Virginia.

The MBA program is part of the Gary E. West College of Business. One hundred percent of these studies can be completed on-line, making it accessible to learners all over the country.

Master of Science in Criminology students can chose to work in law enforcement or corrections and courts following graduation, explains professor Keith Bell. Skills taught include supervising, treating,

counseling and arresting those who come in contact with the criminal justice system. This new program will graduate its first class in December 2017.

The MA/MS Program in Biology offers a wide variety of choices for students. The traditional biology program prepares students to continue their education at a high level in a competitive atmosphere. A Zoo Science tract will be available in the fall of 2018 and will be offered completely on-line. An innovative five year accelerated program will allow students to complete both a Bachelor's and Master's degree in that time frame. Professor Joseph Horzempa is proud to be developing a budding relationship between WLU's biology department and the West Virginia School of Osteopathic Medicine for a smooth transition between the two.

The university expects to announce more master programs over the next year. President Greiner is proud to continually introduce "new programs that make sense in the Ohio Valley."

UNDERGRADUATE MAJORS:

Accounting | Advertising Communication | Art Education Pre K-Adult, 5-9, 5-Adult | Athletic Coaching | Athletic Training
 Bachelor of Applied Science | Bachelor of Arts in Organizational Leadership and Administration | Biology Education | Broadcasting | Business
 Chemistry | Chemistry Education | Communication Studies | Community Education Community Arts | Disabilities Services
 Educational Leadership in Faith Organizations | Museum Education | Outdoor Education | Sports, Recreation & Wellness
 Teaching English & Global Education | Computer Information Systems | Creative Art Therapy | Criminal Justice | Dental Hygiene
 Digital Media Design | Ecology, Evolution, and Organismal Biology | Elementary Education K-6 | Early Childhood Education Pre-K-K
 Multi-Categorical Special Education K-Adult | Special Education (MI, LD, BD) | English Education 5-9, 5-Adult | English Literature
 English Rhetoric and Writing | English Graphic Narrative | Entrepreneurship | Environmental Stewardship and Education | Exercise Physiology (Clinical)
 Exercise Physiology (Health & Fitness) | Finance | General Biology | General Business | General Science Education | Geography & Planning
 Health and Physical Education - Athletic Coaching Track | Health and Physical Education - Education Track | Health Care Management | History
 Human Biology | Interdisciplinary Studies | Journalism | Management | Marketing | Mathematics Education | Medical Laboratory Science
 Microbiology | Museum Education | Music Performance | Music Technology | Nursing | Traditional BSN | RN to BSN | BS/BA to BSN
 Organizational Leadership & Administration | Physician Assistant 3 plus 2 major | Pre-Medicine | Pre-Professional | Psychology | Public Relations
 Regents Bachelor of Arts Degree | Secondary Education | Social Studies Education 5-9, 5-Adult | Social Work | Sociology | Special Education
 Speech Pathology-Audiology | Sports Management | Theater | Tourism and Event Management | Visual Communication
 WLU-WVSOM Pre-Medicine Program | WLU/WVU Dental Early Admission | Program (DEAP) | Zoo Science

GRADUATE PROGRAMS:

Master of Arts in Education | Master of Biology | Master of Business Administration | Master of Professional Studies
 Master of Science in Criminology | Master of Science in Physician Assistant Studies

A photograph of a young man with a beard, wearing a maroon long-sleeved shirt, leaning over a black metal park bench. He is looking down at a smartphone in his hands. The bench is situated on a paved walkway next to a grassy area with trees in the background. The scene is brightly lit, suggesting a sunny day.

WIFI UPDATE RESULTS IN ROBUST SERVICE

While students were enjoying their summer vacation, Pittsburgh firm Dagostino Electronic Services were working to strengthen secure and reliable Wi-Fi services to every corner of campus. The \$800,000 update includes data access points in all public spaces, inside and out, as well as a 10-time increase in speed. Students noticed immediately the improved robust Internet access all around campus.

Senior Haseeb Ashfaq enjoys the expanded Internet services on campus.

INCREASED ENROLLMENT

While the national trend for college enrollment has been on the decline, West Liberty University can boast an increase in student numbers. Much of this is due to the continuing additions of graduate programs, but enrollment is up for undergraduate programs as well. President Greiner believes that West Liberty University's determination to "listen to students and plan around their needs" attracts new students. Several of the new projects on campus are the direct result of suggestions made by students when asked what would make the campus more appealing, such as the outdoor fire pit and the on-campus convenience store located in the College Union. These changes have resulted in a first year student enrollment increase of 11.5 percent this fall.

MARCHING HILLTOPPERS

The Marching Hilltoppers were eliminated in 2015 due to state-wide budget cuts. However, administration held on to hopes that it could be reinstated in the near future, and next fall, that hope will be fulfilled. President Greiner is "thrilled to have the band back." Although funding has not been restored through the state, WLU has found ways to balance the budget and reallocate funding to make space in the budget for the marching band.

The black and gold uniforms that were purchased several years ago will be taken from storage to welcome the Marching Hilltoppers band back to the university.



WLU CONNECT

WLU Connect is a social networking platform just for WLU students and alumni. Started in May 2017, it is a secure network available only to approved participants. With dozens of individual groups for graduating years, majors, extra-curricular activities or employment industry, it allows students and alumni to connect socially and professionally. Many alumni have indicated that they are willing to mentor students, and the job opening board is always busy with postings. Executive Director of Alumni and Community Relations Ron Witt is excited about the opportunities this provides to "re-connect, give back, expand and get ahead."



Sophomore Damir Barakat from Ukraine, graduate student Nur Masarwa from Israel, sophomore Laura Huwe from Germany, senior Don Yue Li from China and graduate student Yuan Yuan Zhang from China meet in the international student office.

INTERNATIONAL STUDENT ENROLLMENT

West Liberty University has seen an increase in international students in recent years. With the addition of graduate programs, many students are returning to WLU after graduation to continue their education in the United States. The International Student Office opened in 2009 and continues to attract the attention of international students searching for colleges in the United States. Currently, 65 students from 25 countries are enrolled at WLU. Nur Masarwa from Israel has returned to study community education because "it's a safe environment and I have a close connection to many people here." Most students cite the tight-knit community and feel of a "second home" on campus, as senior marketing major Dong Yue Li from China expressed.



West Liberty University's Facelift

Changes on Campus Create a New Environment

In the last few years, West Liberty University has seen many changes. New majors, graduate programs, more student housing and a return of the Marching Hilltoppers have changed student life, but the outward appearance of campus has changed as well. Take a tour of the updates made to the structures on campus.

Campbell Hall of Health Sciences

The home to chemistry, dental hygiene, medical laboratory sciences, nursing, speech pathology and physician assistant studies programs, this \$23 million state-of-the-art building opened in

May of 2014. Named in honor of alumnus Dr. Clyde Campbell, president emeritus of WLU (1984-1995), it is located on Faculty Drive and provides students with the newest technology to enhance their education.

West Family Stadium

Renovated and renamed in 2014, the stadium now boasts new grandstand seating and an expanded press box. As an NCAA Division II host, the university needed updated lighting for evening events and enhanced broadcasting capabilities.



West Family Athletic Complex

The Gary E. West Family donated \$1 million for the construction of a soccer and track complex that will be completed in August 2018. The new turf complex will be used by the existing women's soccer team and track teams as well as the new men's soccer team.

Kelly Theatre

The theater inside the Fine Arts building was updated in 2014 with new flooring and seating. The decor was also changed to a darker color to create focus on the stage.

Boyd Hall

After being closed for three years, Boyd Hall reopened in fall of 2017 as all single room dorms. Renovations include new paint, updated electrical wiring, appliances and bathroom facilities.

Rogers Hall

This co-ed dorm was modified in fall of 2017 as single rooms for students. Each floor has community bathrooms, kitchenettes and lounges.

SPORTS ON THE hilltop

WEST LIBERTY GREETES TWO NEW COACHES AND A STAND-OUT ATHLETE

WEST LIBERTY UNIVERSITY HAS AN OUTSTANDING TRADITION OF EXCELLENCE IN SPORTS. TO CONTINUE THIS LEGACY, THE UNIVERSITY WELCOMES TWO NEW PROGRAMS. MEN'S VARSITY SOCCER WILL HAVE A NEW FIELD COMPLEX AS WELL AS A NEW COACH IN THOMAS OLIVIER. WOMEN'S ACROBATICS AND TUMBLING WILL BE INITIATED WITH COACH TREASURE FIELDS. THE TALK OF CAMPUS THIS YEAR HAS BEEN SUPER-ATHLETE DAN MONTEROSO. HE TAKES A MOMENT TO TALK ABOUT HIS TRANSFER TO THE HILLTOP AND HIS EXPLOSIVE ATHLETIC CAREER HERE.

Thomas Olivier - Men's Varsity Soccer

Thomas Olivier is the new Men's Varsity Soccer coach. He has been working to create the soccer team and to continue a tradition of greatness for the college. Thomas explained, "I started coaching youth soccer, and I did that for 20 years. Then I coached college soccer at Marshall for eight years before coming to West Liberty."

"It's unique to start a program from scratch," he said of his decision to come to West Liberty, "The challenge was intriguing to me, and with



Soccer coach
Thomas Olivier

the commitment from the Athletic Director and the President, I knew I could get good athletes to participate."

"We are trying to build tradition and history of soccer for West Liberty," Thomas explained, "And that takes careful planning. We are working on recruiting, which has been going well since February, and a new facility is being built that will help us achieve all of this. We are also looking into how we work with these young men to make them the best players and students they can be." Thomas added, "We do that with our team's keyword: Pride. Pride for me has two meanings, first as an acronym that spells out Personal Responsibility In Daily Effort. Secondly, we want our students to be proud of the school, the community and university to be proud of the team, and the alumni to be proud of the work the students are doing."

Treasure Fields - Acrobatics and Tumbling

Treasure Fields, the women's Acrobatics and Tumbling coach, explained how she found her way to West Liberty and what she brings to the program. "Before I went to college," Treasure stated, "I coached Fame All Stars

Acrobatics and tumbling
coach Treasure Fields



cheerleading in Virginia Beach, Virginia. Then, while I was at Concordia University, I was a graduate assistant coach. I always wanted to coach acro and tumbling, so when I heard that West Liberty was starting a new program, I applied for it as soon as the job listing was posted. I remember thinking to myself how exciting it would be to help build a new program for a school. Since I come from a small program at Concordia, I know how to connect with students in a way that coaches from larger programs cannot. I can give the students more attention."

Treasure added, "I'm here to build opportunities for female student athletes, and I appreciate the support I receive from the University and the President. I have a lot of pride in being a part of West Liberty. I'm proud of the close-knit family atmosphere, our focus on affordable education, and especially President Greiner. I also love being a part of a school that is continuing to grow and improve." The Acrobatics and Tumbling team will compete in their first meet at home against West Virginia Wesleyan College at 2 p.m., February 11, 2018.

Student Athlete Profile—Dan Monteroso

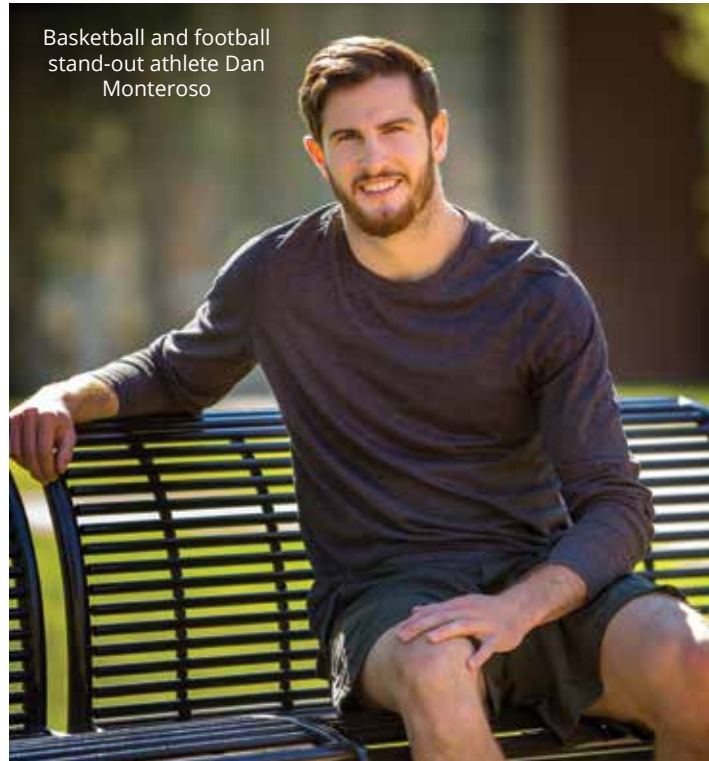
Dan Monteroso, a graduate transfer from NCAA Division 1 Purdue, the St. Clairsville, Ohio native not only led the nationally-ranked Hilltopper men in scoring last season (18.2 ppg.), he was also the leading scorer for the WLU football team with 14 touchdowns and more than 900 receiving yards as a wide receiver. Dan described why he transferred from Purdue to West Liberty for his master's degree, his athletic career, and what West Liberty means to him. "I grew up in St. Clairsville. Both my parents work here, and growing up I came to games at WLU, so it felt like it was the right place to go for my master's," Dan stated.

"The highlight of my athletic career at West Liberty has to be winning the Mountain East Conference tournament title. We won three games over the three days the tournament took place," Dan said. "At Purdue, we didn't win as much as we would have liked, so winning with the team here was huge. I am happy we were able to get that done."

Dan continued, "I am proud of how everyone treats each other here. There is a family environment at West Liberty that you don't get at bigger schools. I'm also proud of how close my teammates and I are to one another. I am a family-oriented guy, so my teammates are like extended brothers to me. If one of us is at an event, we're all there. I'm not sure what I'd do without them."

When asked about his future, Dan said, "I want to become either a football or basketball coach and climb the ranks to head coach. I'd also like to have a healthy family life, where we don't have to worry about money. But right now, I'm just looking forward to having a good upcoming season. I'm extremely happy I decided to come back and be a Hilltopper. I'm looking forward to the basketball season, and I'm hoping it's another good one."

Basketball and football
stand-out athlete Dan
Monteroso





ALUMNI ACHIEVEMENT

Class of '78 Graduate Changes Science for the Galaxy

Brian Joseph '78 is the founder, president and CEO of Touchstone Research Laboratory, a Triadelphia company that is today a global leader, a company that he took public this past summer. Brian didn't have an advanced academic degree in science when he started his company at age 23, rebuilding a second-hand electron microscope in a rented basement room in Wheeling. He grew the business with a small loan from his mother, which he used to buy an old downtown building with the high basement ceilings necessary to install a rebuilt IBM super-computer, purchased at a fraction of its original cost because of his ability to refurbish it himself.

"Don't let anyone tell you you can't do this stuff. You can."

Today, Touchstone's is a story of an innovating, expanding and increasingly global company, connecting with the private and public sector to provide materials that no one else in the world can. Their products include a new carbon fiber that is used as part of a thermal protection system for a vehicle that goes over 3000 mph; fiber-reinforced aluminum used in naval weapons systems and—in tape form—by NASA to stiffen the inside of launch vehicles to lighten up the weight of the actual rocket. Brian predicts we will use this product in the future for things like cars and airplanes as well. "We are the only producer of this in the world ... we have probably nine patents related to this."

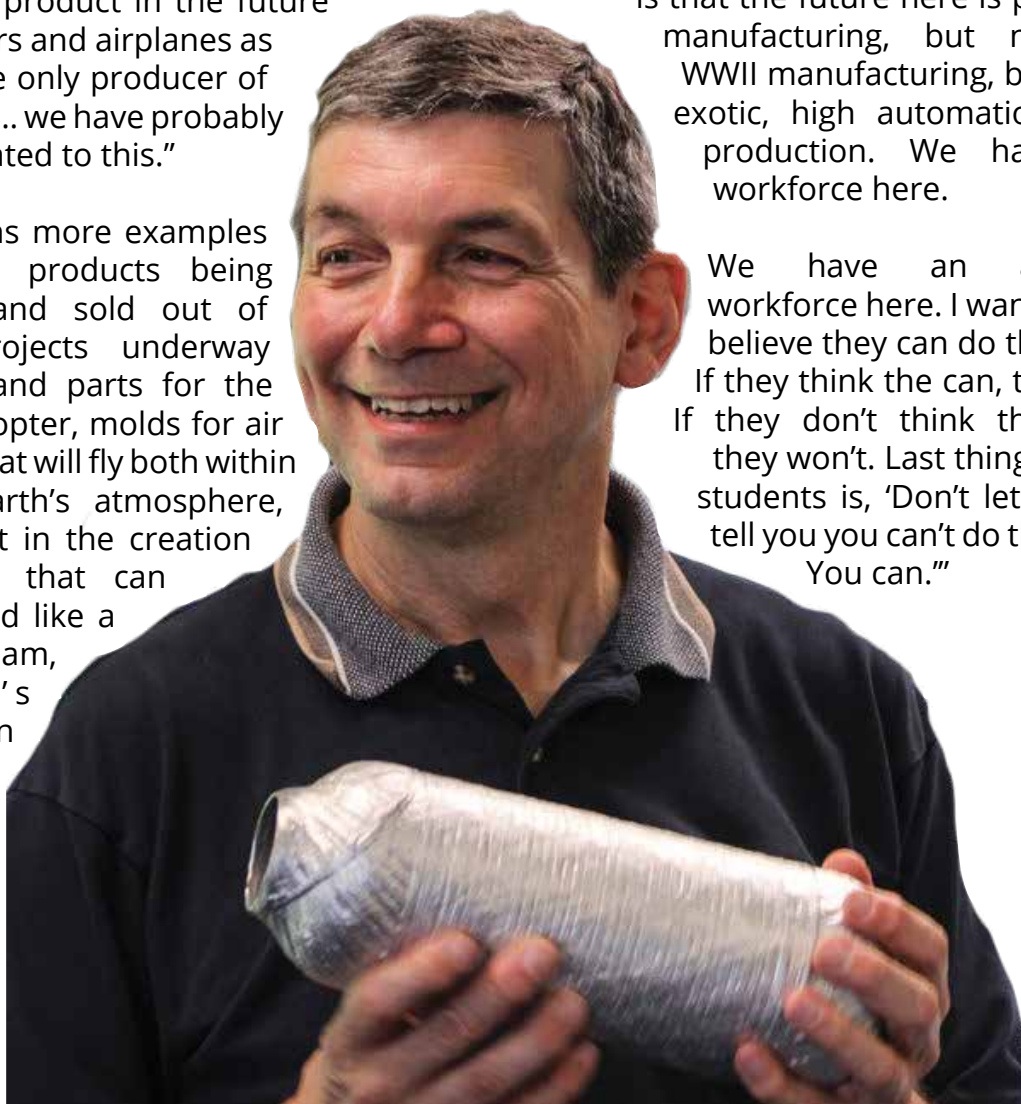
There are dozens more examples of cutting-edge products being made, tested and sold out of Touchstone. Projects underway include molds and parts for the Blackhawk helicopter, molds for air travel vehicles that will fly both within and beyond Earth's atmosphere, and involvement in the creation of an airplane that can take off and land like a helicopter. C-Foam, Touchstone's most well-known product, is a coal byproduct. Brian believes that someday soon all rockets will be coated with a product that is made from coal

mined in West Virginia. "This is going to be huge, this is going to go global, this is going to be in every (Naval) ship moving forward. I've got all the confidence in the world about that."

Touchstone has used coal to create what Brian considers the greatest scientific endeavor in the world right now: the James Webb space telescope, the replacement for the Hubble telescope. "It's eight times bigger, can see a million miles into space, but here's what's so exciting about this, it's going to see back in time 13.4 billion years. You will see the formation of some of the earliest galaxies."

When Brian thinks about the future of science and technology careers in the Wheeling region, he is optimistic. "We have the most amazing collection of people here; they didn't necessarily go to college but were self-taught. My thought is that the future here is probably manufacturing, but not like WWII manufacturing, but really exotic, high automation, high production. We have the workforce here."

We have an amazing workforce here. I want kids to believe they can do this stuff. If they think they can, they will. If they don't think they can, they won't. Last thing I say to students is, 'Don't let anyone tell you you can't do this stuff. You can.'"



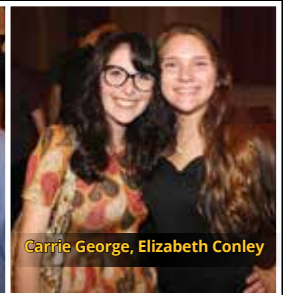
Alumni Choir Concert

SPOT: College Hall DATE: Sunday, October 15, 2017

The West Liberty University Department of Music and Theater hosted an alumni choir concert at 6 p.m. Sunday, Oct. 15 in College Hall for anyone who sang under the direction of Dr. Alfred R. de Jaager as part of Homecoming 2017 festivities. De Jaager assisted current Director of Choral Activities Ryan Keeling in the performance. De Jaager was the longtime director of Choral Activities and an associate professor of music. Dr. de Jaager joined West Liberty in August 1966 and retired in 2014, when he moved to Cambodia.



Valery Staskey, Michael Anderson



Carrie George, Elizabeth Conley



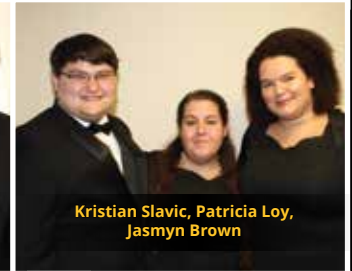
Alan Cline, Anna Stephan-Robinson,
Lara Cline, Pat Garrett



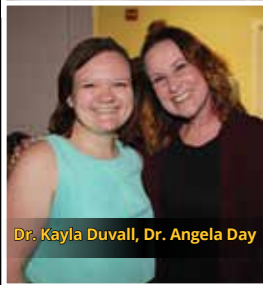
Josh Garrett, Gerard NeCastro



Dave Ziolkowski, Jerry Lee,
Zach Ziolkowski



Kristian Slavic, Patricia Loy,
Jasmyn Brown



Dr. Kayla Duvall, Dr. Angela Day



Emily Fournier, Greg Gust, Vincent Fournier,
Kelli Fournier



Jacob Walker, Erik Waugh,
J. Sean McVey, LaKedria Lozano



Ben Exley IV, Alfred de Jaager,
Lynne Exley

Athletic Hall of Fame Induction

SPOT: Academic, Sports and Recreation Complex DATE: Saturday, October 28, 2017

The 37th annual induction ceremony for the West Liberty University Athletic Hall of Fame was held last Oct. 28 at the Academic, Sports and Recreation Complex. This year's class features Bill Beattie (baseball), Jeff Carroll (wrestling), Gerry Craft (baseball), Tori Hansen (women's basketball), Rachel Mason (softball), Leanne Straub (women's tennis) and Vinnie Monseau (wrestling). The Hall of Fame's Class of 2017 was recognized on the field at West Family Stadium that afternoon during halftime of the football game against Concord.



Buzz Evans, John Stephenson, Nancy Stephenson, Lynn Ullom



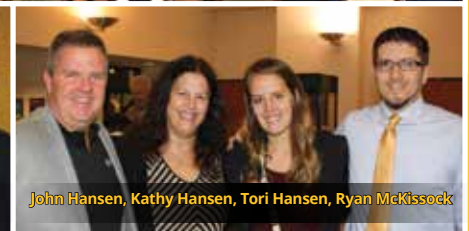
Inductees: Tori Hansen, Bill Beattie, Rachel Mason, Leanne Straub, Louise Craft, Vincent Monseau, Jeff Carroll



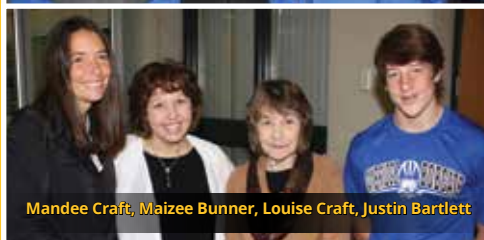
Mark Bartlett, Rick Spencer, Tank Moore, Jeff Carroll



Brian Edison, Rich Schoene, Scott Schenerlein



John Hansen, Kathy Hansen, Tori Hansen, Ryan McKissock



Mandee Craft, Maizee Bunner, Louise Craft, Justin Bartlett



Jan McGhee, Steven Humeniuk, Danielle McGhee,
Kayla Humniuk, Don McGhee



Griffin Straub, Austin Straub, Gary Straub, Pam Straub

Hilltop Players Wall of Fame Ceremony

SPOT: Kelly Theatre DATE: Saturday, October 14, 2017

2017 was the inaugural year for this ceremony. Professors Dr. Helen M.T. Kelly, Mr. Stanley Harrison and Mr. John E. Reilly were honored as Wall of Fame inductees. The official ceremony was followed by a reception and a performance of the first show of the 2017-2018 season: "As It Is In Heaven."



Adam Cornett, Marcy Carroll, John Carroll, Lloyd Carroll



Linda Cowan, Cassandra Hackbart



Maribeth Thompson, Sue Beth Warren



Mike Aulick, Kristi Aulick, Louie Aulick, Eliza Aulick



Meaghan Macey, Maggie Balsley,



Jo Lynne Nugent, Susan Cervone



Meta Lasch, John Reilly



Karissa Martin, Bob Gaudio, Thomas Cervone, Judy Hennen



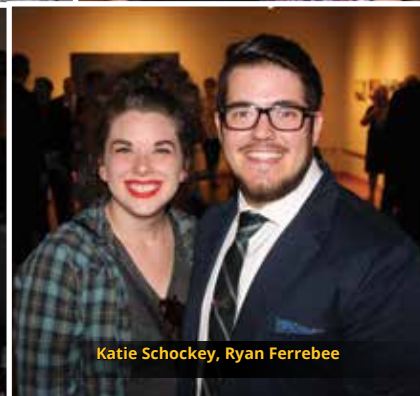
Chad Grubb, Bethany Fernbaugh



Clare McDonald, Liz Richter, Jeremy Richter



Dee Gregg, Annie Kurtz-Kopay



Katie Schockey, Ryan Ferreebe

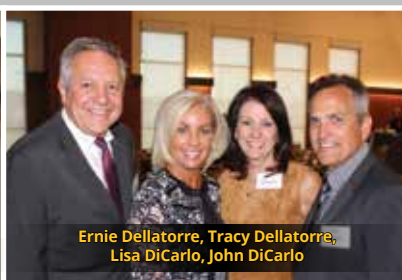
West Liberty University President's Recognition Dinner

SPOT: Highlands Event Center **DATE:** Friday, October 13, 2017

This invitation-only dinner honored new members of the Alumni Wall of Honor, John Hennen '70, Katie Kacmarik '08 and Al Roszczyk '80. It also honors donors who are members of the John P. McCullough Society, the President's Circle and the Nathan Shotwell Society and thanks them publicly for their support.



Ann Coffaro, Dave Coffaro, Flip West, Gary West



Ernie Dellatorre, Tracy Dellatorre,
Lisa DiCarlo, John DiCarlo



Edward Grimes, Sandy Grimes, Nancy Miller-Greiner, Stephen Greiner



Dr. Catherine Monteroso, Stacy Greer,
Gary Dietz, Jeff Monteroso



Honorees: Katie Kacmarik,
Al Roszczyk, John Hennen



Les DeFelice, Connie Nelson, John Dolan,
Kimberly Dolan



Jared Thompson, Chelsea Williams,
Hayden Blazer, Matt Lynch



Michael Ferns, Linda Ferns, Ed Pastilong, John Grim

Homecoming 2017

SPOT: WLU Campus

DATE: Saturday, Oct. 14, 2017

WLU hosted another fun and well-attended Homecoming event the weekend of October 13-15. Saturday's events kicked off with an Alumni Run for any former cross country or track team members. All day long food, drinks and games could be found, making it the perfect spot for family fun. The Homecoming parade and football game were highlights of the weekend. Tailgating prior to the game against Glenville State provided a place for catching up with former classmates.



Vance Miller, Michael Petteway,
Early Brogdon, Michael Salko



Gary Dietz, Stacey Greer,
Andy Richardson, Sis Richardson



Tonya Duke, Patricia Dalesio,
Nancy Deters, Karen Ullom

Alumni Post-Homecoming Party

SPOT: G-Top DATE: Saturday, October 14, 2017

Following the Homecoming football game, alumni and friends gathered at G-Top, the Generations-operated restaurant pub just across from WLU's main campus entrance. Attendees enjoyed food and drinks while listening to the music of Hit Play and reminiscing with other alumni.



Kiki Rodriguez, Amy Becker,
Amanda Mortis, Kristin DiClaudio



Jon-Michael Brunner, Timmy Mirandy,
Michael Coss, Brandon Polanski



Anna Mae Figaretti-Koehler,
Rosemarie Ambrose-Billie



Brad Blair, Mary Blair, Pat Ford



Dave Mathieu, Nick Sparachane,
Paul Billiard, Tony Kuklica



Gavin Hutchison, Liz Flowers,
Marcus Schumacher, Marley Norman



Dan Enich, Ross Vukovich, Doug McClain



Devin Burchill, Anthony Guerra, Amy Webster, Early Brogdon



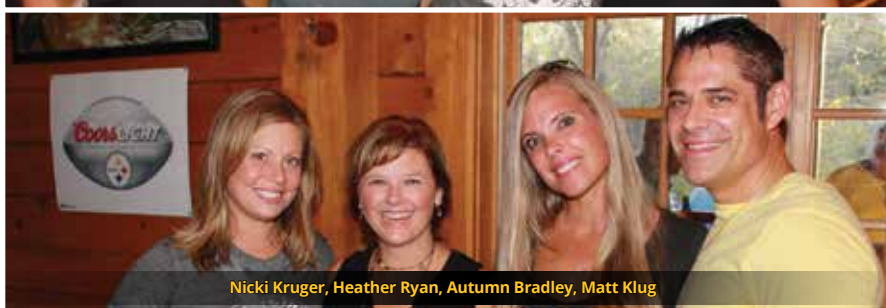
Dallas Cosgray, Michael Camilletti, Ryan Scappini,
Hannah McNerney



Chad Bonifant, Bill Thompson,
Tony Gerber



Michelle Shaver, Kathleen Swisher, Theresa Bonifant, Tiffany Troye



Nicki Kruger, Heather Ryan, Autumn Bradley, Matt Klug

WEST LIBERTY UNIVERSITY FOUNDATION BENEFACTORS REPORT

JULY 1, 2016 - JUNE 30, 2017

Dear Friends,

Fiscal year 2017 was outstanding! It was one of growth for both West Liberty University and the WLU Foundation. The growth is reflected in the financials but also in the strength of our institution. The Foundation staff and Board of Directors worked hard to improve structures, procedures and communication for our donors. We worked closely with Dr. Stephen Greiner, WLU President, and his team to address the needs of campus and help achieve goals that support his vision. We worked closely with you to fulfill your philanthropic dreams to improve the lives of our students and advance West Liberty University. On June 30, 2017, we closed the books on a very good year and opened the door to new opportunities that can only be realized with your continued support.



Angela Zambito Hill, CFRE
Executive Director, WLU
Foundation

We are pleased to publish the following report, which provides financial information and recognizes our most generous donors. For more information on the WLU Foundation, please visit wlufoundation.org or call 304-336-5635. To see the impact of your contributions, please join us on the Hilltop at your convenience for a tour, event or visit. I promise — you won't be disappointed. Thank you so much for your confidence in the WLU Foundation. The future continues to look promising.

In gratitude,

A handwritten signature in blue ink, appearing to read 'Angela'.

Angela Zambito Hill, CFRE
Executive Director, WLU Foundation

Dear Friends of West Liberty University,

On behalf of the West Liberty University Foundation Board of Directors, I thank you for your ongoing support which has allowed West Liberty University and its outstanding and deserving students to thrive. The mission of the Foundation is to support, strengthen and sustain the University through cultivation, investment and stewardship of private funds, and it is your generous contributions that allow us to successfully fulfill our mission. The role of the Foundation continues to grow more critical in the face of declining state funds and a greater need for private support. We are fortunate to have an outstanding base of support from donors like you.



David Croft, Esq.
Chair, WLU Foundation
Board of Directors

The following report provides the financial details of our robust fiscal year 2017. While sharing these figures is important to ensuring your confidence in the Foundation, know that behind these numbers are countless individual, human stories of the positive impact your gifts have had on WLU students and the larger community. In service of the Foundation and our donors, we are continually committed to the growth of our financial assets in order to provide sustainable support for the University's bright future.

Sincerely,

A handwritten signature in black ink, appearing to read 'David Croft'.

David Croft, Esq.
Chair, WLU Foundation Board of Directors

STATEMENT OF FINANCIAL POSITION

WEST LIBERTY UNIVERSITY FOUNDATION, INCORPORATED STATEMENTS OF FINANCIAL POSITION JULY 1, 2016 - JUNE 30, 2017

ASSETS		2017	2016
Cash and cash equivalents		\$ 117,646	\$ 69,844
Unconditional promises to give		1,103,234	242,226
Other receivables		7,555	12,059
Investments at estimated fair value		14,638,884	12,461,210
Beneficial interest in perpetual trust		2,175,746	2,056,347
Other assets		67,707	67,707
TOTAL ASSETS		\$ 18,110,772	\$ 14,909,393
LIABILITIES AND NET ASSETS			
LIABILITIES			
Accounts payable and accrued expenses		\$ 8,880	\$ 11,075
Liability for charitable gift annuities		21,477	24,701
Total liabilities		30,357	35,776
NET ASSETS			
Unrestricted		1,561,783	1,232,238
Temporarily restricted		5,207,072	3,494,435
Permanently restricted		11,311,560	10,096,944
Total net assets		18,080,415	14,873,617
TOTAL LIABILITIES AND NET ASSETS		\$ 18,110,772	\$ 14,909,393

KEY MEASUREMENTS AND CALCULATIONS:

	Result	Calculation
Total Foundation Expenditures stated as a % of Total Assets under Management	1.2%	\$218/\$18,110
Ratio of Total Contribution to Total Foundation Expenditures	12.49 to 1	\$2722/\$218
Ratio of Total Contributions to Total University Support Expenditures	2.1 to 1	\$2,722/\$1,289

To view the audited Financial Statements, Notes and Certified Public Accountants Opinion thereon, please go to www.wlufoundation.org.

STATEMENT OF ACTIVITIES

WEST LIBERTY UNIVERSITY FOUNDATION, INCORPORATED STATEMENTS OF ACTIVITIES AND CHANGE IN NET ASSETS FOR THE YEAR ENDED JUNE 30, 2017

SUPPORT AND REVENUES

Contributions	
Interest and dividend income	
Loss/Gain on investments	
Special Events	
Change in value of split interest agreements	
Other income	
TOTAL SUPPORT AND REVENUES	

EXPENSES AND LOSSES

West Liberty University support:	
Scholarships	
Athletic programs	
Academic programs	
Capital improvements	
Other programs	
Fundraising	
General and administrative	
TOTAL EXPENSES AND LOSSES	

CHANGES IN NET ASSETS

NET ASSETS AT BEGINNING OF YEAR

NET ASSETS AT END OF YEAR

RETURN ON AVERAGE NET ASSETS EMPLOYED DURING FISCAL YEAR END JUNE 30, 2017

Net Investment Income:

Total Support & Revenue
Less: Contributions
Net Investment Income

Average Net Assets

	2017		2016
	In Thousands		
	Total		Total
\$	2,722	\$	1,293
	1,689		(259)
	87		77
	119		(113)
	97		139
	4,714		1,137
	471		460
	126		119
	289		403
	112		38
	253		417
	39		68
	218		152
	1,508		1,657
	3,206		(520)
	14,874		15,394
\$	18,080	\$	14,874

11.0% 1,992/\$18,080

4,714
2,722
1,922

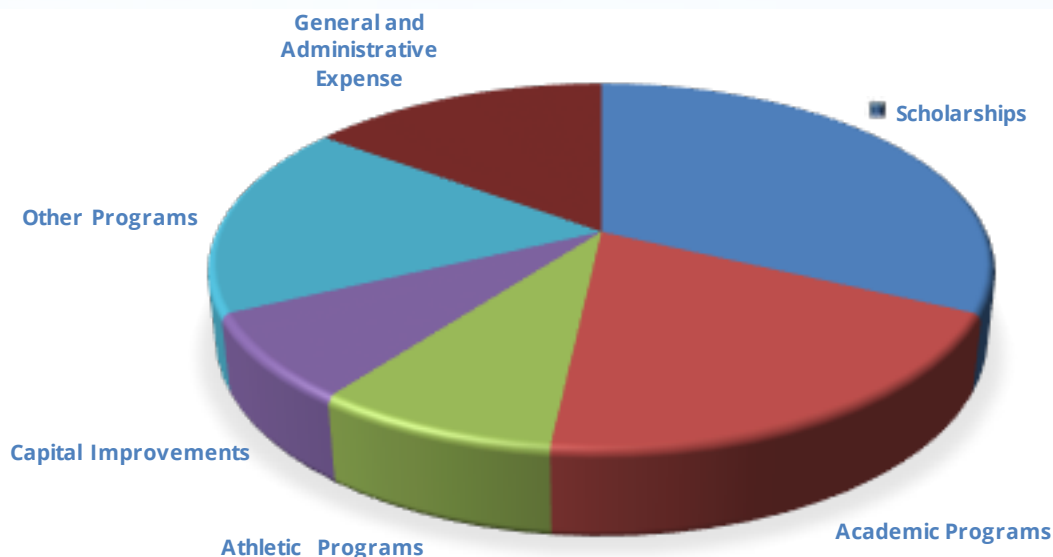
16,477 (\$14,874+\$18,080)/2

To view the audited Financial Statements, Notes and Certified Public Accountants Opinion thereon, please go to
www.wlufoundation.org.

FY 17 UNIVERSITY SUPPORT & EXPENDITURES

2017 University Support & Expenditures

University Support	In Thousands	Percent of Total
Scholarships - Based upon a total of FY 17 Annual Cost of \$18,500.00 for tuition, room & board for an in-state student, this amount provided the equivalent of 25 full scholarships.	\$471	31%
Academic Programs - Expenditures for JASON Learning Project, classroom equipment, Professional Development Schools, Fluency Project, teacher mentors, etc.	\$289	19%
Athletic Programs - Expenditures for Hilltopper Athletic Club, recruiting expenses, team travel expenses for tournaments, practice uniforms, purchase equipment, etc.	\$126	8%
Capital Improvements - Wrestling locker room renovations, baseball windscreen, tennis courts, football stadium renovations, pre-constructions phase of track, turf & lights project	\$112	8%
Other Programs Expenditures for technology upgrades, science fair, WLU-TV (Channel 14), library expenses, alumni activities, faculty travel, College Community Choir, faculty development and research, community support, etc.	\$253	17%
Foundation Expense		
General and Administrative Expense - Includes salary and benefits, rent, operating expense, travel, etc.	\$218	14%
Fundraising	\$39	3%
TOTAL UNIVERSITY SUPPORT	\$1,508	100%
GRAND TOTAL SUPPORT AND EXPENDITURES	\$1,508	100%



NATHAN SHOTWELL SOCIETY

The Nathan Shotwell Planned Giving Society, established in 1997, recognizes and honors those who have made provisions for the West Liberty University Foundation through a bequest in a will or other estate-planning arrangement. The Society is named for the Reverend Dr. Nathan Shotwell, who founded West Liberty University in 1837 and served as its leader until 1854. Dr. Shotwell is credited with the establishment of the high academic standards to which the university continues to aspire.



The following alumni and friends of West Liberty University have made such provisions:

Jack C. Adams '63	Alfred R. de Jaager	Howard Herrington '66 +	Virginia T. Mellott '43	Ruth Ann Scherich '51
Mary K. Ahrens +	G. Richard Deenis '89	Helen (Gibson) Herzler +	Stella Caravas Misoyianis '52	Sara H. Schnitzler '49 +
Judith Schryver Azallion '99	Leslie DeFelice '76	Ralph E. Herzler, Jr. +	Jenny Lynn Morlan '81 +	Howard L. Shackelford '73
Donna Waugh '65	Roger L. DuBois '53	John William Hoppers '63	R. Clark Morton '53	Peter M. Sontag '69
Berlage & Bruce L. Berlage	Helen P. Elbin +	David Jones '60 +	Christine C. Muroski	Lawrence A. Spalla '70
Patricia L. Bethel '79	Paul N. Elbin +	David B. Kadar '74	Theresa Nagy '68	Rebecca B. Stevenson
Mildred Kaetzel Biggs +	Carlyle Farnsworth +	Miriam E. Kaiser '29 +	Florence Irene Nesbitt +	Richard G. Stevenson
Albert M. Blatnik '49 +	Robert Richmond Fisher	Billy E. Keller '70	Kathryn T. Neuman +	Cynthia L. Stickley
Thais F. Blatnik '76 +	Carol L. Flaherty '66	Bob '67 & Patti Kota	Mary Jane Norona '49 +	Blanche Barte Stidd
Elizabeth M. Boger '43 +	Dennis K. Flaherty '67	Rachel Katherine Krinke '45 +	Diana Duncan Ott '60+	Lawrence H. Talley +
Mark Bohlman '75	Susan M. Fowler '73	John P. Larch '80	Andrew Paesani, Jr. '54	Carol Kirsch Terry '74
R. Emmett Boyle	Sara Jane Fritz '43 +	Meta M. Lasch '76	Judith Bartell Paesani '55	Richard F. Terry '68
Donald S. Bruno '52	Rosemary M. Front +	Howard G. Lemasters '49 +	Andrew J. Pasden, Jr. '69	Thomas E. Terry '75
Robert J. Burke '76 +	Carolyn Sue Garrison '64	Theresa J. Lemasters '48	Linda L. Pasden	B. Ann Thomas
Neva N. Caldwell '22 +	Richard D. Garrison '59	John P. Liptak '80	Karen D. Rea '65	Nancy Crow Trentini
Clyde D. Campbell '53	Gloria E. Gasser '80	Virginia M. Lutes +	Phillip S. Rea '65	LeRoy A. & Eve L. '70 Wallin
Leah Gracey Campbell '39 +	Edward C. Gaughan +	Kathleen A. Maestle '93	Carol Jean Reuther	Joan M. Watkins '65
Richard H. Carter	Hazel Jane Gilleland +	Helen Kimble Maier '48	Richard & Sandra J.	Carol F. Webster '77
Audrey Ciripompa	John D. "Jack" Grewell '34 +	Ruth Markwell	LaPosta '64 Riopelle	Flip West
Lula K. Collins +	Edward G. Grimes '71	Toni J. Mason '60 +	Mary Jane Reaney Ritson '45 +	Gary West '58
Sharon Murphy Coote '69	Chester P. '47 & Rose Grossi +	Rita M. Masur	Barbara C. Robinson	Elizabeth Wolf
C. Nolan Cox '72	Robert P. Haas '57	Catherine C. Mattingly '62	E. Kent Robinson '61	Mary Ann Wolf +
Naomi Craig +	Kenneth Harris '37 +	Daniel N. Maxwell '31 +	Ronald L. Robinson '53 +	Anonymous (18)
Dennis L. Daugherty '76	Constance H. Hein '81	Marilyn A. McCain '72	Sam K. Rollins '68	
Joseph E. Davis '61	Harry R. Hein	Irene Meagel +	Esther Rowe +	Deceased +

PRESIDENT EMERITUS DR. JOHN P. MCCULLOUGH SOCIETY

Individuals, foundations, and corporations who have already contributed a minimum of \$25,000 in cumulative giving are recognized as members of the John P. McCullough Society.

A & B Sales, Inc.	Claude Worthington	John L. Grim	Virginia T. Mellott '43	Howard L. Shackelford '73
Lee Weeks Abraham '56+	Benedum Foundation	Brian & Rachelle Harlow	R. Clark '53 & Patricia Morton	John C. Shaw +
Marty '75 & Patti '76 Adams	David '77 & Ann Coffaro	Robert & Stephanie Harris	Larry '80 & Paula '72 Moore	Vincent '64 & Linda Shimp
Jack C. Adams '63	Lula K. Collins +	Kenneth Harris '37 +	Rudolph Mumley '50 +	Floyd Shuler '64
Mary K. Ahrens +	Community Foundation	Harry & Constance '81 Hein	Nationwide Foundation	George Smith '68 +
Aladdin Food Management	for the Ohio Valley	Howard '66+ & Catherine	Florence Irene Nesbitt +	Sodexo Campus Services
Services, LLC	Consol Energy	Herrington	Kathryn T. Neuman +	Solutions 21, Inc.
The Albert Schenk III &	The Cornerstone Group	Ralph E. & Helen M. Herzler +	Mary Jane Norona +	Peter '69 & Jingsi Sontag
Kathleen H. Schenk	Kenneth D. Cover '65	W. Peterson & Jean Holloway	John + & Jo Lynne	Southwestern Energy Company
Charitable Trust	Mark D. Crow	Fred & Audrey Horne	Nugent '75 Stimmel	Fred & Joan Stamp
American Electric Power	Charles & Lavoo Crutchfield+	Huntington Corporate Giving	Ogden & Snookie Nutting	State of WV - Higher Ed.
Foundation	DaimlerChrysler	IMG	The Nutting Foundation	Policy Commission
Charles R. '66 & Letty Annett	Corporation Fund	Gary '64 & Paula Inclan	Teresa Morton Nyhart	George E. Stifel +
The Axiall Foundation, Inc.	Joseph E. Davis '61	Norma Jeffries +	Ohio Valley Health	Swisher International, Inc.
Barnes & Noble College	Alfred R. de Jaager	Johnson & Johnson	Services & Education Corp.	Ohio Co. Board of Education
Bookstores	Leslie DeFelice '76 &	Family of Companies	Olga Kohut Sebelsky	The Health Plan of the Upper
Bayer Corporation	Connie Nelson	David Jones '60 +	Charitable Fund	Ohio Valley, Inc.
Phyllis A. Beneke +	Doctors Urgent Care	Daniel '75 &	Ormet Corporation	Touchstone Research
Mildred Kaetzel Biggs +	Shirley Ann Dietz +	Deborah '75 Joseph	The P & G Fund	Laboratory
Albert '49 + & Thais '76 Blatnik +	John '78 & Kimberly '77 Dolan	Michael J. Joseph +	Andrew '54 &	Shawn '87 & Julie '86 Ullom
Bordas & Bordas, PLLC	Dominion Foundation	Brooke P. Koehler	Judith Bartell '55 Paesani	United Bank, Inc.
R. Emmett Boyle &	Catharine Hoffman Dorer +	H. R. Bucky '64 & Joanne Kopf	E. Alex '82 & Valerie '87 Paris	Valley National Gases, Inc.
Debra J. Boger	Dragon and Phoenix	Koppers Industries	Parkvale Bank	Vance Memorial Church
Bristol-Myers Squibb	Software Inc.	Rachel Katherine Krinke '45 +	Pfizer, Inc.	Verizon West Virginia
Foundation, Inc.	Roger L. DuBois '53	Howard G. Lemasters '49 + &	Pittsburgh Alumni Chapter	WCHS-TV
Donald '52 & MaryAnne Bruno	Edgar Martin Classic	Theresa '48 Lemasters	Pittsburgh Conference on	WesBanco
Neva N. Caldwell '22 +	David '64 &	Helen E. Levenson+	Analytical, Chemical &	Gary '58 & Flip West
Clyde '53 & Joan '62 Campbell	Linda '64 Edwards	Lary Loew '75 +	Applied Spectroscopy	West Virginia University
Leah Gracey Campbell '39 +	Paul & Helen Elbin +	Howard & Wendy Long	Prezkip - Chappleair &	Research Corporation
Louis '65 &	Lawrence H. Talley +	The Louis & Sandra	Associates AC	Wheeling Island Hotel
Darlene '61 Cardamone	Ben & Lynne Exley	Berkman Foundation	Project BEST	Casino Racetrack
John W. Carenbauer, Sr.+	ExxonMobil Foundation	Harry & Helen '61 Ludeman	Naomi Craig +	James Taibi '86 & Kristina Wil-
The Charles M. &	Francis J. & Edith Jackson	Lyell B. and Patricia K.	Thomas '70 & Eileen Reinbold	liams '86
Thelma M. Pugliese	Family Foundation	Clay Foundation, Inc.	Mary Jane Ritson '45 +	Williams MLP Operating, LLC
Charitable Foundation	Nicholas & Fran Frank	Main Street Bank	Jerry '60 & Connie '57 Roberts	Randy & Betty Worlds
Chesapeake Energy	James '61 & Carol '60 Frum	Phyllis A. Marsh	E. Kent '61 & Barbara Robinson	William C. Wright '64
Corporation	Hazel Jane Gilleland +	Margaret Anne Mayerich	Albert '80 & Susan Roszczyk	WTRF-TV
Chevron North America	Joe '69 + & Rita Gnazzo	Daniel N. Maxwell '31 +	The Ryan Ferns Healthplex	WV Department of
Exploration and	Cynthia Goad	Jeremy C. McCamic	William P. &	Education & The Arts
Production Company	Robert Godfrey +	Thomas '54 &	Jane Atkins '63 + Sargent	Terry & Karen Younkens
Chris Hess Foundation	Donelda J. Godfrey	Peggy '50 McCarroll	Douglas '73 & Susan '71 Sarkis	Anonymous (6)
Civitan Club of Wheeling Inc.	Martha Hudson Goodrich '44	John P. McCullough	Sara H. Schnitzler '49 +	
Joseph D. Clark, Jr. '64	Jack '34 + & Mildred Grewell	Irene Meagel +	Larry H. Sebelsky+	

+Deceased

HONOR ROLL OF DONORS

The West Liberty University Foundation Inc. is pleased to report that during the 2016-2017 fiscal year, over \$1.9 million was received to advance the mission of the university. Below is a listing of the many generous individuals, corporations, foundations, and organizations who contributed to this effort.

THE PRESIDENT'S CIRCLE

President's Circle is reserved for donors contributing \$1,500 or more within a fiscal year and includes donors in six different giving societies. During this reporting period, President's Circle members provided over \$1.6 million in private funding to the Foundation.

1837 SOCIETY- \$100,000 OR MORE

INDIVIDUALS:

Mary Jane Ritson '45 +
Lawrence H. Talley +

CORPORATIONS, FOUNDATIONS & ORGANIZATIONS:

Claude Worthington
Benedum Foundation

WILLIAM CURTIS SOCIETY- \$25,000-\$99,999

INDIVIDUALS:

Charles R. '66 & Letty Annett
Jack C. Adams '63
Marty '75 & Patti '76 Adams
Gary '58 & Flip West

CORPORATIONS, FOUNDATIONS & ORGANIZATIONS:

Vance Memorial Church
WV Department of
Education & The Arts
Anonymous (3)

LIBERTY SOCIETY- \$10,000-\$24,999

INDIVIDUALS:

David '77 & Ann Coffaro
Elizabeth J. Kuhn '00
John P. McCullough
Teresa Morton Nyhart
E. Alex '82 & Valerie '87 Paris
Albert '80 & Susan Roszczyk
James Taibi '86 & Kristina
Williams '86
Terry & Karen Younkins

CORPORATIONS, FOUNDATIONS & ORGANIZATIONS:

Barnes & Noble College
Bookstores
Charter Kennel Inc
Chris Hess Foundation
ExxonMobil Foundation

Francis J. and Edith Jackson
Family Foundation
Main Street Bank
WesBanco Wheeling

WINDING ROAD SOCIETY- \$5,000-\$9,999

INDIVIDUALS:

Donald '52 & MaryAnne
Bruno
Madona Davis
Gary K. Dietz
Carlyle D. Farnsworth +
Lynne & Ben Exley IV
James '61 & Carol '60 Frum
Carol L. Frum '60
Audrey Greene '65
Harry & Helen '61 Ludeman
Phil & Wendy Polack
Bernard P. Twigg '78

CORPORATIONS, FOUNDATIONS & ORGANIZATIONS:

John C. Shaw Scholarship
Fund

ACADEMY SOCIETY- \$2,500-\$4,999

INDIVIDUALS:

Tara M. Beiswenger '88
Clyde '53 & Joan '62
Campbell
Alfred R. de Jaager
Cynthia Goad
Stephen Greiner & Nancy
Miller-Greiner
John William Hoppers '63
Robert & Melinda Kreisberg
Carol Ann Loew
Margaret Anne Mayerich
Samuel T. McCullough '12
Thomas T. Mendenhall
Ogden & Snookie Nutting
Jamie Peck
Sharon S. Saseen
Floyd Shuler '64
Jeffrey Simms '89
Fred & Joan Stamp
Cynthia L. Stickley

Thomas '75 & Brenda '79
Thomas

CORPORATIONS, FOUNDATIONS & ORGANIZATIONS:

Bordas & Bordas, PLLC
Community Foundation for
the Ohio Valley
The Cornerstone Group
Hole n Run
Kalkreuth Roofing &
Sheet Metal, Inc.
McKinley & Associates
Panhandle Cleaning
& Restoration
Panhandle Farmers Mutual
Insurance Company
Undo's Restaurants
W.Va. - Ohio Motor Sales,
Inc.

HILLTOP SOCIETY- \$1,500-\$2,499

INDIVIDUALS:

David '70 & Barbara '70 Beck
Christine Carder '72
Thomas A. Cervone '75
James '74 & Sharon Clark
Joseph D. Clark '64
Richard '59 & Mary Jane '57
Copeland
Kenneth D. Cover '65
Michael Cullinan '69 &
Beverly Petrelli '75
Robert J. DiCiccio '73
John '78 & Kimberly '77
Dolan
Roger L. DuBois '53
Samuel & Mildred '52+ Engel
Glenn '65 & Eula Fresch
Richmond W. Glover '63
Janet L. Honecker
Daniel '75 &
Deborah '75 Joseph
Jason & Sarah Koegler
H. R. Bucky '64 & Joanne
Kopf
Robert & Patricia Levenson
Janet Loew '85 &
Robert Cooper

Kathleen A. Maestle '93
Henry '61 & Mary Marockie
Michael J. Marshall
David Miller '84
R. Clark '53 &
Patricia Morton
Don Muhleman '71
Andrew '54 &
Judith Bartell '55 Paesani
Andrew '69 & Linda Pasden
Edward & Mona Pastilong
Beverly Petrelli '75
Fred '63 & Karen Principe
Richard L. Riesbeck
Jerry '60 &

Connie '57 Roberts
Scott R. Shipman '97
Shane '10 & Michelle Stack
Philip '64 & Sharon Stahl
Jim & Charlene Stultz
Jennifer Lee Takacs '95
Nancy Crow Trentini
David & Beth '85 Weaver
Michael J. Young
John '77 &
Pamela '76 Zorbin

CORPORATIONS, FOUNDATIONS & ORGANIZATIONS:

American International
Group, Inc.
The Monteverde Group, LLC
Pittsburgh Alumni Chapter
Pittsburgh Conference
on Analytical, Chemical
& Applied Spectroscopy
Robert L. and Helen E.
Levenson Charitable Trust
Wells Fargo Foundation
Educational Matching
Gift Program

HONOR ROLL OF DONORS (CONTINUED):

TOWER CLUB-\$500-\$1,499

INDIVIDUALS:

Robert K. Abel '73
 Bill Abraham
 Carole J. Adams
 Michael Aulick
 Thomas J. Babb
 Rowena Baker
 Brad '79 & Mary Blair
 Jason K. Blair '95
 John R. Bonassi '69
 Fred & Carol Booth
 Larry '68 & Cathy '68 Carpenter
 Robert & Claire Caveney
 Lihua Chen
 R. A. Cipriani '55
 Audrey Ciripompa
 Barbara Rikli Clark '69
 Joanna J. Cover '70
 C. Nolan Cox '72
 Brian L. Crawford
 David '89 & Jennifer Croft
 Joseph E. Davis '61
 Joseph Davis
 Leslie DeFelice '76 & Connie Nelson
 Dave & Mary Ann Edwards
 Gregory & Leann Elkins
 Nicole L. Ennis '03
 Peter L. Freeman
 H. E. Neumann Co.
 James Hetherington '51
 Stephen Hilliard
 Neal & Karen Hodgkiss
 Fred & Audrey Horne
 Thomas F. Howley '58
 Richard A. Johnston
 Brian '78 & Julie Joseph
 Lucy Kefauver
 Theresa Lemasters '48
 John A. Lovrak '69
 Phyllis A. Marsh
 Mario '65 & Chris '64 Mastroianni
 Peggy McCarroll '50
 Ronald '91 & Tammy McClain
 Tammy McClain
 Samuel '68 & Marian McCullough
 Scott McNulty '87 & Maya Crone
 Michael Meyers '74
 Bill '63 & Shirley '63 Parry
 Anthony Provenzano
 Thomas '88 & Kimberly
 (Trevena) '98 Puskarich
 Juliana M. Riley
 Michael S. Robertson '70
 Thomas Rolls '69
 Samuel L. Seamon
 Justin & Kristin Seibert
 Howard L. Shackelford '73
 Terence A. Shimp '68
 John Edgar Smith '61
 Anne E. Stephens '69
 James '51 & Audrey '52 Stepp
 Richard & Rebecca Stevenson
 Samuel Spencer Stone
 Stella Strickling '75
 Rickey D. Thomas '03
 David Waples '63
 Jim & Lynn Watson
 Adam & Erika Weidner
 Annie P. Wise '72
 Myles B. Witchev '54
 Anonymous

CORPORATIONS, FOUNDATIONS & ORGANIZATIONS:

Branch Banking & Trust
 Company - BB&T
 Belmont Savings Bank
 Century Equities, Inc.
 David and Sara Cohen Giving Fund

Collegiate Alumnae of Wheeling
 Direct Online Marketing
 Ennis Properties LLC
 The Freddie Mac Foundation
 McKinley Carter Wealth Services
 Northwood Health Systems
 Regional Economic Development
 (RED) Partnership
 Ohio Valley Surgeons, Inc.
 Pfizer, Inc.
 Progressive Bank
 The Progressive Insurance
 Foundation
 Project BEST
 Radiology Associates, Inc.
 Richardson Copy Concepts
 St John S Episcopal Church
 Starvaggi Charities, Inc.
 State Farm Insurance
 The Home for Men
 The Ohio County Commission
 Thomas Financial
 Thursday Music Club
 Upper Ohio Valley Building &
 Construction Trades Council
 West Virginia Executive
 WFF Facility Services, Inc.
 Wheelhouse Creative
 Wheeling District Dental Society
 Wheeling Park Commission
 Zeno, Pockl, Lilly and Copeland, A.C.

FOUNDER'S CLUB-\$100-\$499

INDIVIDUALS:

Richard H. Achtzehn '69
 Betsey Alden '61
 Tess Arnold
 Joshua W. Bach '98
 Lynne Bailey '65
 John Bailey II
 Betty M. Bailey '70
 Thomas '64 & Patricia '64 Baird
 Kathleen Ballato '74
 Clinton & Elizabeth Barr
 Jamie R. Battista '96
 Brian & Kimberly Bader
 Thomas H '62 & Lynda Becker
 Nick Bedway
 Jennifer Belknap
 Bruce L. & Donna Waugh '65 Berlage
 David Bierkortte
 Michael '97 & Charity '99 Blackwell
 Christopher K. Blair '07
 Blake, Bednar, Blake & Richardson
 Elaine M. Blasko
 Mark Bohlman '75
 Chip & Tami Bolon
 John R. Bonar '35
 Suzanne Styers Boundy '61
 Margaret Bowman
 Allan A. Boyd '66
 Robert '63 & Arlene '61 Boyles
 John P. Bradshaw '98
 Coach Thomas Bruder
 Peggy A. Brummett '69
 James & Lisa Bucon
 Kay K. Byard '62
 Nikki Ann Cable '69
 Susan Cain '78
 James R. Calhoun '79
 Paula Carnes '66
 Lawrence & Sandra Carney
 Frank A. Carolla
 Joe & Sandy Cartisano
 Anthony J. Chiazza
 Bill & Jennifer Childers
 Jennifer Childers
 Chirp's Auto
 Paul Christman
 Ernest & Maureen Comiskey '75
 Mary E. Conwell
 Scott A. Cook '89

Jane Costanzo '84
 Lanny Couto
 Linda Cowan
 Michael R. Cunningham '74
 Mary Jo Davis-Headley '79
 Gerald de Jaager
 Mary Lou DeFillippo '73
 Joseph '66 & Kathleen '65 Demko
 Stephen & Kimberly Deri
 Lawrence '70 & Nancy '70 Dobias
 Joseph '72 & Debra Donahue
 Bernadine Dorich '67
 David '64 & Barbara '64 Dougherty
 Jarod & Miriam Douglas
 Doyle's Heating & Cooling
 Gloria W. Driver '53
 Russell Dunkin
 Robert Earlewine '61
 Richard '64 & Patricia Edge
 Thomas J. Fallon III '86
 James A. Fiorilli '71
 Leslie R. Fish '70
 Cindy Fluharty
 Daniel Fodor
 G. Quinn Ford '72
 Patrick & Alecia Ford
 Daniel Forrester '74
 Jackque L. Fowles '74
 Amanda Francis '05
 William J. Freyler '63
 Robert '74 & Debra '99 Galbreath
 Debra J. Galbreath '99
 Carolyn S. Garrison '64
 Robert Gaudio '74 & Claire McDonald
 William E. Gavin '69
 Christopher M. Gibbs '08
 Nelson & Bonnie '97 Gilbert
 Gary & Missy Glessner
 Annette Godown
 Domenic Granata
 Edward G. '71 & Sandra L. Grimes
 H. Charles Grubbs '71
 Bernard & Rosamund Grubler
 Becca Gulino '87
 Judith Osburn Gummere '61
 Anthony J. Habbit '97
 Louie '88 & Donna '87 Haer
 Shannon Halicki
 William Hall
 Nancy Y. Hall '63
 The Family of Patrick Hamilton
 Lori L. Hanson '84
 Matthew Harder
 Greg & Janet Harris
 Diana Harto
 Richard & Pamela Herndon
 Travis P. Hinkle '07
 Donald & Jean Hofreuter
 Michael R. Holtgrewe
 Marilyn Horacek
 Robert G. Hores '60
 Pamela S. Hostutler
 Paul F. Hothouse '72
 Nancy Howley '58
 Jack D. Hudson '55
 Henry M. Hupp '43
 Russell '79 & Marylu '79 Hutchins
 Marylu Hutchins '79
 Matthew & Whitney Inkster
 Whitney Inkster
 Frank & Kathleen Jackson
 Cynthia Eller Jafary '90
 Michael C. Jebbia '03
 Gayle Jesse
 Marvin Johnson
 Chuck Jonas
 Richard L. Jones '80
 Wilbur S. Jones
 Michael '68 & Janet Joseph
 Katie L. Kacmarik '08
 Lourdes Karas
 John '71 & Debbie '72 Karas
 Billy E. Keller '70
 Gary Kenamond

Charles & Julie Kenamond
 Kepner Funeral Homes
 Karen Kettler
 Charlotte Khourey '76
 Deborah Kiggins '92
 Scot '96 & Deborah '92 Kiggins
 James R. Kimmel '01
 Jaclyn M Kitts
 Linda K. Kleinfelder '85
 Zachary '14 & Anastasia '16 Klemm
 Chuck '65 & June '66 Knaack
 Jeff Knierim
 Dennis Knight '72
 Richard Koch '78
 Edward Kochman '67
 Bill '71 & Debby Koegler
 David A. Kraus '70
 Robert & Tammy Kruse
 Anthony Kuklica '75
 Jean Paul & Courtney LaFollette
 Jeremy & Paula Larance
 Arlene J. Lawson '82
 Joseph '01 & Emily '92 Leffe
 Larry J. Liberto '64
 Roberta Linger
 Kathryn L. Loparo '57
 Zachary '02 &
 Kathleen '02 Loughman
 Donna J. Lukich '79
 Lawrence E. Lykins
 Anthony R. Macedone
 Christine Machel '73
 Gerald & Laura Main
 John R. Marchlenski '75
 Edward '63 & Irene '64 Marks
 Ruth Markwell
 Mickey Marotti '87
 Allen Marshall '62
 Vishakha Maskey
 Sherri A. Mason
 Ronald '78 & Michelle '79 Matella
 Matzke Concrete Products
 Ronald '65 & Mary '62 Mauck
 Richard (Gene) McCausland
 Carolyn McConnaughey '83
 Greg McCroskey
 Kelly L. McKeever '95
 Gary McNutt '72
 Nona Styers McQuay '53
 Rebecca Meacham
 Neal K. Mechling, Sr. '72
 Matthew & Carolyn Meininger
 Avraham Melamed '73
 Rodney & Marsha Merinar
 Andrew J. Mesaros '43
 Miklas Meat Market
 Denise Miller '76
 Clifford '78 & Sandra '78 Miller
 John '76 & Denise '76 Miller
 Gust W. Mitchell '64
 Vincent E. Monseau '92
 Vince '62 & Kay '97 Monseau
 Barbara A. Morrell-Hughes '62
 Ronald D. '97 & Cynthia L. '97 Moser
 Steve & Karen Muenze
 Maureen McCaig Murphy '61
 Kevin Murray
 Janet E. Murray '85
 Frank Muzopappa '58
 William F. & Cynthia A. Nash
 Stephen W. Neisel '94
 Rebecca Nestor
 Nikki A. Nazionale-Birkhimer, DDS
 Carl '01 & Stephanie North
 Thomas M. Olivier
 John & Marla Olkosky
 Opus Music Club
 Frank & Marsha '64 Paczewski
 Michelle L. Panepucci
 Park Health Center
 Jerry L. Pelle
 Jeffrey L. Peretzman
 Deana Pfarr-Taylor '79
 Louis J. Piccone '72

Mark A. Pickens '86
 Thomas M. Pinto '74
 Dean & Sherry Polen
 Theresa D. Poquis '92
 Barbara Pace Porter '61
 Fawn L. Price
 Joseph John Puzsar, Jr. '56
 Nancy L. Quigley '97
 Norman C. Radcliffe '68
 Lorna Reach '68
 Daniel J. Reeves '65
 Corey Reigel
 Jeane-Anne Renshaw '93
 C. Timothy '69 & Patricia '69 Rhodes
 Patricia Rhodes '69
 Jessica Rine '04
 Bonnie Ritz '75
 Douglas & Anya Robertson
 Timothy A. Rodsky '71
 Charles '70 & Karen '72 Roman
 Michael Romano '72
 Gail H. Schmalz '52
 Charlene Seamens '75
 Curt '97 & Tammi Secrist
 Roger G. Seeber
 Ronald L. Shenk '68
 Jerry Shook '77
 John W. Skiratko '66
 Michael Skudin
 Gary '74 & Anne '74 Smith
 Mark '99 & Melissa Smith
 Jenny Bissett Snyder
 Clifton L. Spinner, Jr. '87
 Michael J. Spisak '68
 Peter Staffel
 Mitchel D. Stevenson '74
 Edward W. Stifel, III
 Leonard Stone
 Adele Storm '83
 Wayne Smith Styers
 Michele R. Sweeney
 Kathleen Swisher
 Michael Sworden
 Larry '72 & Jessica '91 Taylor
 Thomas '75 & Carol '74 Terry
 Denise D. Wick '99
 Jared C. Thompson '13
 Alvin & Connie Thompson
 Bonnie B. Thurston
 Debra Tiano '76
 Olive L. Turner '51
 S. Michael & Romaine '80 Turrentine
 Gilbert '76 & Eileen Ullom '76
 Lynn Ullom '85
 Helen S. Vetter '71
 Sam Vucelich, Sr. '59
 Kathleen Wack
 LeRoy A. & Eve L. '70 Wallin
 Kay Dyche Weed
 Jeremy R. West '99
 Carrie J. White
 Robert & Susie Wiggins
 Herb & Helen Williams
 Samantha C. '12 & Albert L. Wilson '09
 Denis '75 & Gretchen '73 Wilson
 David Withers '66
 Ron Witt '92
 Brenda K. Womack
 Thomas & Tamara Wood
 Nancy Hall S. Wright
 Jack & Hall Wright
 Linda Yaeger '71
 Michael '72 & Carol '71 Young
 Randy J. Young '77
 Basil P. Zabek '64
 Michael Zeno '78
 Anonymous

**CORPORATIONS,
 FOUNDATIONS
 & ORGANIZATIONS:**
 Aetna Foundation
 Altmeyer Funeral Homes

AM Architecture
 Attention to Detail
 The Bechtel Foundation
 Matching Gifts Program
 Cardinal Health Foundation Inc.
 Clayton Engineering Company
 First Choice America
 Community Federal Credit Union
 Fort Henry Capital LLC
 Glen Dale United
 Methodist Church Choir
 Glessner & Associates, PLLC
 Grisell's Funeral Home & Crematory
 Hill International Trucks, LLC
 ICR Equipment Rental
 Iron Workers Local Union 549
 Johnson Controls Foundation
 Education & Arts Matching
 Gift Program
 Lamar Outdoor Advertising
 McCoy Insurance
 Agency, Inc. State Farm
 Perfido Weiskopf Wagstaff + Goettl
 Punjack Mechanical, LLC
 Puskarich Accounting
 Quality Inn New Kensington
 Reliable Appliance
 Riverbridge Wealth LLC
 RM Associates Accounting
 Service Inc.
 Sand Hill Sports
 Scarpone Law Offices
 St. Clairsville Eagles Aerie 2541
 Steenrod School PTA
 Steuben Radiology Associates
 Technology Services Group, Inc.
 The Health Plan of the
 Upper Ohio Valley, Inc.
 Touchstone Research Laboratory
 Treasured Memories
 Charitable Funding
 West Texas Roadhouse
 Wheeling Hospital
 CRNAs/Secretaries/
 Anesthesia Techs
 Whipkey Heating & Air Conditioning
 Wine & Beverage
 Merchants of WV, Inc.
 WLU Dental Hygiene Department
 Your Auto Connection, Inc.

GOLD & BLACK CLUB-\$1-\$99

INDIVIDUALS:

Stephen P. Austin '70
 Sue Ann H. Backus '70
 Jared N. Bailey '13
 Gene Ray Baker '97
 Kelly Young Baker
 Dorothy L. Bales '55
 Linda Rose Barney '64
 William Beazel '62
 Georgette Binnington '81
 James A. Black '75
 Joe '92 & Candice Blair
 John L. Blair, Jr.
 David Blowers
 Alicia Dianne Board '71
 Russell C. Bond, Jr.
 Stephen P. Bucher '71
 Lindsey A. Bugaj '09
 Rebecca Bugaj
 Linda Chappell '67
 David Clark '77
 Margaret A. Cochran '65
 Regina Cody '65
 Kyle & Katie Cooper
 Jennifer Doane Cross
 Craig M. Crow '02
 Liam Cuff
 William G. Culan '71
 Richard A. Daley '70
 Elizabeth C. Daugherty '71
 Bridgette Dawson

Carmen C. DeLuca '72
 Paul & Suzanne Diehm
 Justin J. Ebeling '00
 Justin R. Edwards '07
 Thomas M. Fahey '75
 Ilamae J. Falter '56
 Chris '02 & Ginny '03 Findley
 Keith W. Flodine '81
 Rebecca Sue Forney '85
 Katherine Freed '80
 Mary Gallo '64
 Bill '84 & Angel '82 Glitch
 Keith Goldman '91
 Mildred B. Graham '56
 Jacob A. Griffin '09
 Gilbert & Cynthia Gross
 Jeanette Gyskevich '75
 Mr. & Mrs. Thomas M. Gulisek
 Ellen M. Haizlett
 Becky Ensinger Hall '83
 Diane Harris '55
 Dolores Dee Harvey
 Stephanie Heagy '86
 John Heiserman
 Linda Heiserman
 John '75 & Lynn '73 Hellstern
 Andrew J. Henry '13
 Jeanne R. Hicks
 Angela Zambito &
 Christopher Chad Hill
 Randall A. Hollingshead
 MaryAnn Hranek
 Edward E. Hughes III '74
 Thomas Hupp '71
 Roger A. Hupp '70
 Robert L. Johnson '83
 William Johnson '70
 Craig Johnson '74
 Robert Johnston '70
 Lisa S. Jordan '87
 LeRoy Kaufman
 Tim Keane '94
 Eric W. Keener '99
 Yoel Kende
 Richard P. Kestermont '70
 Brent Kimball
 Norbert Klug '81
 Corey M. Klug '15
 Daniel '74 & Carol '75 Knoch
 Karen Knowlton
 Susan Koch '69
 Robert '71 & Susan '69 Koch
 Robert Kohler '73
 Kenneth '66 & Margery '67 Kriner
 Margery Kriner
 Martha Lash '78
 Austin Lee
 Andrew W. Lewis '05
 Donna Geraldine Lilley
 Randy E. Little
 Gay Lucci '71
 Mary Ellen Lurty '60
 Lillian J. Lutz '55
 Joyia Lytle
 Judy Mackorell '68
 Jean Mann '54
 Doris F. Manning '55
 Ashley Mazzella '03
 Jude '75 & Joanne '76 McConnell
 James McCoy '86
 Roderick A. McCune '96
 Richard McDowell
 Thomas McFadden '73
 Barbara C. McFarland
 Mary Jo McGinley '78
 Daniel J. McKeever '69
 Gerald Mechling '87
 Jeanne Mercorelli '85
 Sharon L. Miller '68
 Mark Miller
 Sandra W. Milliken
 Herb '89 & Ashlea '04 Minch
 Linda K. Monti '74
 Lynn '70 & Kelley '71 Moore

Noah Mull
 Ken & Jill '15 Murray
 Matthew J. Myles '13
 James C. Neuhart II '63
 Evan K. Newman '15
 Debra A. Niekro
 Donald Niess '73
 Carl Nix '71
 Neil '10 & Jill '06 Nixon
 Donald P. Nolte '78
 Steven Novotney '97
 Mary Kay Olashuk '87
 Margaret P. Packer '71
 Paul '81 & Nancy '80 Peluchette
 Antoinette Perkins '72
 Allison M. Phillips '03
 Dorothy R. Pizzuti '84
 Jennifer D. Powell
 Danny Prado '73
 Thomas J. Priest '00
 Mark & Jeanie Prince
 Jo Ann Ramsey
 Kelly Reasbeck '87
 Kathryn Ridgley
 Robert W. Rieck '65
 Charity M. Riley '03
 David & Joyce Robinson
 Dwight Romick '60
 Sherry Rosenberg
 Fred Rossell
 Barbara J. Ruthers '70
 Rebekah E. Schindler '70
 Charles '63 & Elsie '69 Schupbach
 Therese Schustriker '87
 Alyson M. Sell '72
 Sylvia Senften
 Levi R. Smith '15
 Marcia Sorge '85
 Barbara Starkey '62
 Larry W. Steffick '76
 Diane C. Stewart '85
 Patricia A. Stough '78
 Robert Strama '86
 Roger W. Sullenberger '92
 Sara A. Sweeney '06
 Chris Swisher '75
 John Taylor '68
 Jeffrey M. Tice '15
 Timothy J. Triveri '13
 Janet H. Tuerff '58
 Rhonda J. Tysk '02
 Roberta J. Underdonk '77
 Dianna Vargo
 Robert J. Varlas '71
 Roberta Veltri '74
 Deanna B. Warco '75
 James & Janet Warsinskey
 Lori B. Weaver '97
 Mary A. West '87
 Lawrence E. Wiedemer '82
 Winland's Wall Words
 Robert P. Wiseman
 David '79 & Elizabeth '64 Wright
 Wendy Younger
 Maureen Zambito

**CORPORATIONS,
 FOUNDATIONS &
 ORGANIZATIONS:**

Franks Hair Quarters
 State Farm Companies
 Foundation
 Thompson Video Productions

We have done our best to provide accurate information in the lists above. Please accept our apology for any errors or omissions. If you have any changes, corrections, or questions, please call the WLU Foundation at 304-336-5635.

Thank you!

Memorial Gifts

Gifts were made by the following donors in memory of the individuals whose names appear in bold font.

Nick Baker

Rowena Baker
Fred & Carol Booth

Joseph A. Bartell

Andrew J. Mesaros '43
Andrew '54 & Judith Bartell '55
Paesani

Thais F. Blatnik '76

Treasured Memories Charitable
Funding

Nelson Cain

John P. McCullough
Carl '01 & Stephanie North
Rhonda J. Tysk '02

Charles B. Davis II '57

Madona Davis
Panhandle Farmers Mutual Ins. Co.

Charles B. Davis III '80

Joseph B. Davis
Mary Jo Davis-Headley '79
Anthony R. Macedone
Anonymous

Elmer & Shirley Ann Dietz

Gary K. Dietz
Treasured Memories Charitable
Funding

William J. Dolan '75

John '78 & Kimberly '77 Dolan

Paul N. Elbin

Michael J. Young

Millie Childers Engel '52

Samuel Engel

Tom Grall

Thomas Bruder
C. Nolan Cox '72
Daniel Forrester '74
Robert '74 & Debra '99 Galbreath
The Family of Patrick Hamilton
Greg & Janet Harris
Yoel Kende
Dennis Knight '72
Anthony Kuklica '75
Randy E. Little
Gay Lucci '71
Gary McNutt '72
Neal K. Mechling, Sr. '72
Avraham Melamed '73
Michael Meyers '74
Kevin Murray
Louis J. Piccone '72
Michael Skudin
Michael Sworden
Jim & Lynn Watson

Elwood '39 & Kay Goddard

Michael J. Young

William R. Grubler '48

Audrey Ciripompa

Dorothy Hewitt

John P. McCullough

Jim Hilliard

Wheeling Hospital CRNAs, Secretaries
& Anesthesia Technicians

Thomas A. Hostutler

Kelly Young Baker
Pamela S. Hostutler
WLU Dental Hygiene Department

E. J. Joseph

Daniel '75 & Deborah '75 Joseph

Johnnie Arthur Frances Kerns

Brenda K. Womack

Robert & Helen Levenson

Betty Blum
Robert & Patty Levenson

James G. Marsh '60

Phyllis A. Marsh

Kenneth B. McMillen

John William Hoppers '63

Johanna H. Meissner

Elaine M. Blasko
Linda K. Monti '74

Leo Miller

Richard H. Achtzehn '69

Christina J. Myers '98

Juliana M. Riley

Mark Nardone '85

Jason & Sarah Koegler

Rosalie Oliver '71

John L. Blair, Jr.
John '75 & Lynn '73 Hellstern
Kay Dyche Weed

Donald L. Pahl, Sr. '58

Cindy Stickley

Kathleen Preheim

LeRoy Kaufman

Beth A. Salatino '88

Kelly Young Baker

Clyde Thomas '70

Scott A. Cook '89

Raymond "Ray" Tredway, Jr.

Jason & Sarah Koegler
Jim & Charlene Stultz

Don L. Seamon

Samuel L. Seamon

Roger Shaw

Mark '99 & Melissa Smith

Constance Stewart

Robert & Melinda Kreisberg

Robert Villamagna, Jr.

Ashley Mazzella '03
Anonymous

Emily Kay Goddard Young

Michael J. Young

Honorary Gifts

Gifts were made by the following donors to honor individuals whose names appear in bold font.

Clyde D. Campbell '53

John Edgar Smith '61

Jim Crutchfield

Theresa D. Poquis '92

Jeraldine W. Dailey

Rowena Baker
Fred & Carol Booth
LeRoy A. & Eve L. '70 Wallin

Alfred R. de Jaager

Linda Cowan

David T. Javersak '67

Stephen P. Austin '70

Rebecca Johnston

Jack C. Adams '63

Meta M. Lasch '76

Audrey Ciripompa

John P. McCullough

Richard Koch '78
Sherri A. Mason
Carl '01 & Stephanie North
Nancy L. Quigley '97
Jim & Charlene Stultz

R. Clark '53 & Patricia Morton

Teresa Morton Nyhart

Andrew '54 & Judith Bartell '55 Paesani

Jo Ann Ramsey

Rick Price

Christopher M. Gibbs '08
Vincent E. Monseau '92
Roger G. Seeber

Alexandra C. Rine '13

Audrey Ciripompa

Robert C. Wick '68

Denise D. Wick '99

West Liberty University Foundation Funds

Listed below are the various funds held by the West Liberty University Foundation, Inc.

Restricted Gifts

Donations are made to the West Liberty University Foundation, Inc. with a specific purpose stated by the donor.

Unrestricted Gifts

Donations made to the West Liberty University Foundation, Inc. support the WLU Foundation Scholarship Program and areas of greatest need, which are identified by the WLU Foundation Need Request Proposal Process.

Types of Funds

Named Endowed Fund

A named endowed fund can be established to provide scholarships, support a professorship or chair in a particular academic area, or support another purpose based on the interest and intention of the donor. An endowment requires that the principal remain intact in perpetuity, or for a defined period of time, or until sufficient assets have been accumulated to achieve a designated purpose. West Liberty University Foundation, Inc. requires a minimum initial gift of \$25,000 to establish an endowed fund. Named endowed funds are listed on an annual basis in certain WLU Foundation publications. Currently the Foundation has a total of 100 Endowed Funds.

Temporarily Endowed Fund

A temporarily endowed fund with a balance of less than \$25,000 may be established with the understanding that the donor/s or governing body intends to fund at a minimum \$25,000 level and that no income generated by the gift principal will be distributed until the \$25,000 minimum principal balance has been achieved. If not fully funded within five years, the temporarily endowed fund will be considered part of the Foundation's general endowment.

Non-endowed Fund

A non-endowed fund is a fund held by the foundation designated for a specific use over a shortened period of time, e.g. Organization accounts, Study Abroad, Capital Projects, etc. The foundation currently has a total of 130 Non-Endowed funds.

More Information

For more information or to establish a fund in the West Liberty University Foundation, Inc., contact:
Angela Zambito Hill, Executive Director
West Liberty University Foundation, Inc.
208 University Drive, CUB #126, West Liberty, WV 26074
304-336-5635 or 304-281-0118

Listed below are the endowed and non-endowed funds administered by West Liberty University Foundation, Inc. The Foundation currently oversees 100 endowed and 130 non-endowed funds. If you are interested in establishing a new fund or making a contribution to an established fund, please call 304-336-5635.

Endowed Funds

Alfred R. de Jaager Choral Scholarship Endowment
 Bill Dolan Scholarship
 Bucks for Brains Endowed Fund
 Caldwell Scholarships
 Carol Frum Endowed Scholarship
 Catharine H. Dorer Endowed Dental Hygiene Scholarship
 Charitable Gift Annuities
 Charlotte Eleanore Ball & Edward Evans Golden Scholarship Endowment
 Classified Staff Employee Scholarship
 Clyde Thomas Scholarship Fund
 Colonel Harold D. Jefferson Endowment
 David T. Javersak College of Liberal Arts Scholarship
 Donald W. & David J. Levenson Foundation, Inc. Science Fair
 Donald W. Jones Music Scholarship
 Doris Lake Jones Scholarship
 Dorothy Long
 Dr. Clyde D. Campbell Endowed Scholarship
 Dr. David G. Edwards Biology Scholarship
 Dr. E. J. Joseph Dental Hygiene Scholarship
 Dr. Edward C. Wolf Endowed Music Scholarship
 Dr. John P. McCullough Scholarship
 Dr. Richard G. and Rebecca B. Stevenson Nursing Scholarship
 Dr. Thomas J. Babb SBA Scholarship Endowment
 Eastern Star Nursing Scholarship
 Edna M. Goodknight Memorial Scholarship
 Eileen M. Reinbold Graphic Design Scholarship Endowment
 Eileen Reinbold Endowment for Kelly Theater
 Elmer F. Dietz Football Scholarship Endowment
 Eugene Crutchfield Memorial Scholarship Fund
 Executive Development Forum
 Faculty Travel Endowment
 Florence Irene Nesbitt Endowed Scholarship Fund
 Florida 250 Club
 Forrest L. Mellott Memorial Football Scholarship
 Gary B. Inclan Endowed Fund
 George and Dolly Grim Memorial Scholarship
 George and Mildred Polak Endowed Scholarship
 Guy H. & Mary Ann West/ Schl of Business Scholarship Endowment
 Hall of Fame Athletic Scholarship
 Hazel Jane Gilleland Scholarship Fund
 Hazlett A. Cochran Scholarship
 Hein Classified Staff Recognition Award
 Horne Family Honors Scholarship
 Howard Herrington Endowment
 Hughes Lecture Series Endowed
 Jack Adams Hilltopper Athletic Club
 James G. Marsh Memorial Scholarship Endowment
 John C. Shaw Scholarship
 John W. Carenbauer Baseball Scholarship Endowment
 Joseph A. Bartell Memorial Scholarship Endowment
 Joseph E. Davis Scholarship

Kathleen A. Pavlisko Baseball Scholarship
 Kathryn T. Neuman Scholarship Fund
 Kenneth B. McMillen Social Science Scholarship
 Kenneth R. Nodyne Scholarship
 Larry V. and Paula K. Moore Scholarship Endowment
 Lawrence H. Talley Science Scholarship
 Leah Gracey Campbell Math. Ed. Scholarship Trust
 Linda S. (Forbes) Edwards Dental Hygiene Scholarship
 Louis A. Brescel, Jr. Scholarship
 Lula K. Collins Memorial Scholarship Fund
 Maria Cigalle-Sontag Endowed Scholarship
 Marty Adams General Endowed Scholarships
 Mary Casey Bates Elementary Education Scholarship
 Mary Jane Ritson Scholarship
 Mary K. Ahrens Scholarship
 McCarroll Family Trust Scholarship
 Meagel Charitable Trust
 Meagel Scholarship
 Mildred Kaetzel Biggs Dental Hygiene Faculty Enrichment Endowment
 Music Scholarship
 Nancy Smith-Harris '36 Scholarship
 Nelson Cain Scholarship
 Nicholas Frank Scholarship Endowment
 Norman C. Winters Memorial Scholarship
 Nursing Scholarship
 Paul N. and Helen P. Elbin Library
 Pete Holloway Scholarship Endowment
 Peter & Jingsi Sontag Scholarship
 Project BEST Endowed Scholarship Fund
 Protestant Campus Ministry Endowment Fund
 R. Clark Morton Scholarship Endowment
 R. Emmett Boyle Conference Center Maintenance Fund
 Raymond G. Hughes Memorial Scholarship
 Robert Godfrey Accounting Scholarship Endowment
 Robert L. & Nancy C. Loew Memorial Scholarship
 Robert L. Levenson Memorial Scholarship Endowment
 Roland E. "Rollie" Williams Faculty Travel Endowment
 Sara Jane Fritz Memorial Scholarship Endowment
 Sargent Dental Hygiene Scholarship Endowment
 Schnitzler/Hartenstein Scholarship
 Silver Bears Scholarship Endowment
 The Cardamone Family Scholarship in Memory of Gregory L. Cardamone
 The Mary Elizabeth Harrison Reiner Professional Development for Health Sciences
 The West Virginia Society of Washington, D.C. Book Scholarship Fund
 United Bank Inc. Technology
 Valerie Renee Callas Scholarship
 Vernon D. "Mike" Riemer Memorial Scholarship Fund
 West Liberty University Foundation Endowment Fund
 William S. & Lee Weeks Abraham Endowed Music Scholarship
 WLU Bookstore Scholarship

Non-Endowed Funds

3D SBA
 48 Hr Film Fest
 Acrobatics & Tumbling
 Al & Thais Blatnik Scholarship
 Alumni Association
 Alumni Park Building Fund
 Andrew & Linda Pasden School of Business Administration Scholarship
 Annual Campaign
 Appalachian Biodiversity
 Art Department Scholarship
 Art Therapy
 Athletic Practice Facility Fund
 Athletic Training Club
 Barnes & Noble Scholarship
 Baseball Scholarship
 Beautification
 Bernabei Women's Basketball Scholarship
 Beth Salatino Memorial Scholarship
 Biology Field Trips
 Bucky Kopf Football Fund
 Campbell Hall
 Campus International Community Center for Arts & Education
 Charles B. Davis III Scholarship
 Children's Literature
 Choir Tour Fund
 Coach Grall
 College Fair
 College of Arts & Communications
 College of Business
 College of Education
 College of Liberal Arts
 College of Science
 Collegiate Alumnae of Wheeling Scholarship
 Colonial Heights Maintenance
 Concert Series
 Constance Stewart Health Sciences Scholarship
 Cory Hewitt Memorial Scholarship
 Council for Exceptional Children
 Crayfish Lab
 Creative Learning Center
 Criminal Justice Program
 Cross Country & Track
 Cross Country & Track Scholarship
 Crutchfield Family Fund
 David Nugent Memorial Trust
 Dental Hygiene Program
 Department of Natural Sciences and Mathematics
 Department of Natural Sciences Scholarship
 Don L. Seamon Memorial Nursing Scholarship
 Donald L. Pahl, Sr. Music Scholarship
 Donald S. & MaryAnne Bruno Education Scholarship
 Dr. John P. McCullough Classified Staff Service Award
 Dr. John P. McCullough Professional Award
 Edgar Martin Men's Tennis
 Entrepreneurship
 Etiquette Dinner
 Flag Football
 Football Stadium Renovation
 Friends of the Paul N. Elbin Library
 Gary West Excellence in Business Fund
 General Non-Endowed Scholarship
 Golf
 Graphic Design Department
 Gray Williamson Legacy Fund
 Health & Human Performance

Hilltop Players' Patron
 Hoop Club (men's basketball)
 IT Services
 Jack Hattman Scholarship
 Jack Mounts SBA Technology Fund
 Jack Schuetz - State Farm Student Athlete Scholarship
 JASON Project
 Jeri Dailey Mathematics Scholarship
 Kelly Theatre
 Kenneth & William Wright Scholarship
 Kenneth Harris Scholarship
 Liberty Oaks
 Maintenance Dept
 Martha Hudson Goodrich Scholarship for Education Majors
 Masters in Arts Education Scholarship
 Math Department
 Men's Soccer
 Message Me
 Nearby Nature
 Nicholas Frank Scholarship
 Nick Baker Scholarship
 Nursing Program
 Online Learning
 Opera Fund
 Pallottini Memorial Scholarship for Outstanding Professional Promise in Dental Hygiene
 PA Program
 PDS - Professional Development Schools
 Physical Education Major's Club
 Pittsburgh Alumni Chapter
 President's Discretionary
 Professor Charles B. Davis Jr. Memorial Scholarship
 Protestant Campus Ministry
 Psychology Program
 Restricted Gifts
 Robert Villamagna Scholarship
 School of Professional Studies
 Shaw Hall Renovations
 Social Work Program
 Softball Scholarship
 Steel Band
 Student Government
 Academic Scholarship
 Student Government Association
 Study Abroad
 Teachers Grants
 Teaching Artist
 The Performing Theatre
 Artist Scholarship
 Theatre Student Travel
 Thomas Hostutler
 Memorial Scholarship
 Track, Turf & Lights Project
 Vance Memorial Presbyterian Church
 College Community Chorus Fund
 Veterans Scholarship
 Wall of Honor
 Warhol Silkscreen
 Wheeling District Dental Society
 Scholarship
 WLSN Channel 14
 WLU Baseball
 WLU CFO Discretionary
 WLU Cheerleaders
 Women's Basketball Legacy Fund
 Women's Golf
 Women's Softball
 Women's Tennis
 Women's Volleyball
 Women's Soccer
 Women's Tennis Scholarship
 Wrestling
 Zach Amedro Football Scholarship
 Zeno, Pockl, Lilly and Copeland Accounting Scholarship
 Zoo Science Student Fund

West Liberty University
208 University Drive
College Union Box 122
West Liberty, WV 26074

Presorted STD
US Postage PAID
Permit No. 21
Freeport OH 43973



SIGN UP AND JOIN TODAY!

RE-CONNECT. GIVE BACK. GET AHEAD.

wluconnect.com